

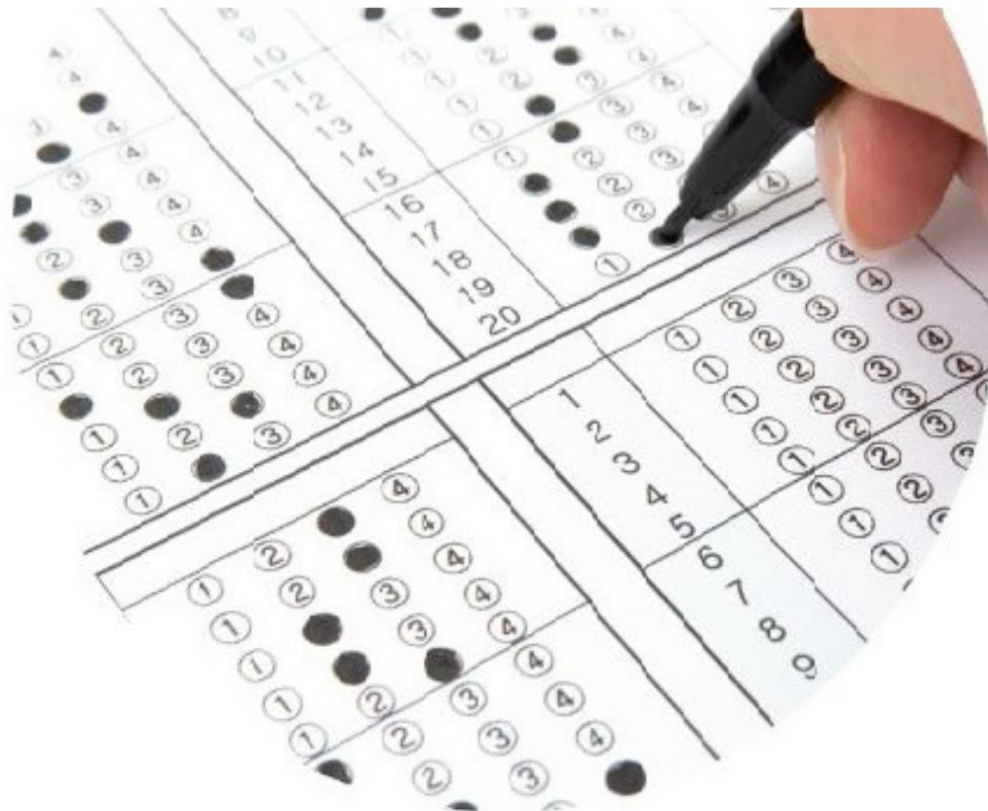


SHANKAR
IAS PARLIAMENT
Information is Empowering

MONTHLY PRESTORMING

DECEMBER 2024

**A compilation of Prelims MCQs with solutions from Current
Affairs of the month**



**SCAN TO
DOWNLOAD**



SINCE 2004

www.shankariasacademy.com
www.shankariasparliament.com

INDEX

02-12-2024	1
03-12-2024	3
04-12-2024	5
05-12-2024	7
07-12-2024	8
09-12-2024	11
09-12-2024	13
10-12-2024	15
11-12-2024	17
12-12-2024	20
13-12-2024	24
14-12-2024	26
16-12-2024	29
17-12-2024	31
18-12-2024	34
19-12-2024	36
20-12-2024	38
21-12-2024	40
23-12-2024	43
24-12-2024	45
26-12-2024	47
27-12-2024	50
28-12-2024	51
30-12-2024	54
31-12-2024	56

MONTHLY PRESTORMING

December 2024

02-12-2024

1) Consider the following statements with respect to the Moire Materials

1. It is formed by stacking identical 2D material layers with a small twist angle.
2. Formation of flat energy bands is a unique feature of it.
3. Tungsten diselenide moire materials is more stable superconductors than the Graphene-based moire materials.

How many of the statements given above are correct?

- a. Only one
- b. Only two
- c. All three
- d. None of the above

2) Black Thrips, sometimes seen in the news recently, is associated with?

- a. An invasive pest species that attacks on chilli crops.
- b. A chronic long-lasting autoimmune disorder.
- c. A migratory bird that visits Eastern Ghats every year.
- d. A newly discovered tree species in Arunachal Pradesh.

3) Consider the following statements with respect to CINBAX, 2024

1. It is a planning exercise aimed to war-game conduct of joint Counter Terrorism (CT) operations under Chapter VII of the United Nations Charter.
2. It is the 1st edition of Joint Table Top Exercise between the Indian Army and the Cambodian Army.

Which of the following statement(s) is/are correct?

- a. 1 only
- b. 2 only
- c. Both 1 and 2
- d. Neither 1 nor 2

4) Which of the following include Hybrid Warfare?

1. Espionage
2. Sabotage
3. Cyberattacks
4. Disinformation and propaganda
5. Election interference

Select the correct answer using the codes given below:

- a. Only two
- b. Only three
- c. Only four
- d. All five

Answers

1.c

Moire Materials

Moire materials represent a ground breaking frontier in material science at atomic level.

- Moire Materials are created by stacking two identical two-dimensional material layers.
- One layer is slightly twisted relative to the other to produce a unique pattern called the "Moire pattern".
- Similar to creating a new visual pattern by slightly misaligning two identical transparent sheets.
- **Formation Process** – Start with a single atomic layer (e.g., graphene, tungsten diselenide).
- Stack an identical layer on top.

- Rotate the top layer by a small angle (typically 1-3 degrees).
- Creates a new structural configuration with unique electronic properties.
- **Key Characteristics** – Emergence of flat energy bands.
- Dramatically altered electron behaviour.
- Unique electronic and quantum properties.
- Different from properties of individual layers.
- **Electronic Structure** – Electrons move slowly across the material and nearly uniform energy levels.
- Strong electron-electron interactions.
- Flat bands create distinctive quantum behaviour.
- **Superconductivity** – Graphene-based Moiré Materials was first discovered with superconducting properties.
- Tungsten diselenide moire materials is more stable superconductors than the Graphene-based moire materials.

2. a

Black Thrips (*Thrips parvispinus*)

- Black thrips is an *invasive sucking pest* that feeds on tender flowers, shedding of flowers and also causes fruit drop in chillies leading to yield loss.
- It is a *threat to the cultivation of Chilli* in major chilli producing areas.
- Its wings are long and narrow, with fringe-like edges.
- It is a cosmopolitan pest species which have been reported from Thailand, Australia, Europe and India.

3. c

Exercise CINBAX, 2024

CINBAX, the 1st edition of joint table top exercise between the Indian Army and the Cambodian Army recently commenced at Foreign Training Node, Pune.

- Exercise CINBAX is a planning exercise aimed to wargame conduct of joint Counter Terrorism (CT) operations under Chapter VII of the United Nations Charter.

- It is the 1st edition of joint table top exercise **between the Indian Army and the Cambodian Army** that commenced at Foreign Training Node, **Pune**.
- The exercise will focus on discussions pertaining to establishment of Joint Training Task Force for *Intelligence, Surveillance* and Reconnaissance besides planning of operations in CT environment.
- Various contingencies will be war gamed and employment of force multipliers in the sub conventional operations will also be discussed.
- The exercise will also involve discussion on information operations, cyber warfare, hybrid warfare, logistics and casualty management, HADR operations etc.
- The exercise will be conducted in **3 phases**.
- Phase-I will focus on preparations and orientation of participants for CT operations during UN peace keeping missions.
- Phase-II will involve conduct of the Table Top exercises and *Phase-III will involve finalisation of plans and summing up*.
- This will bring out practical aspects of the theme-based training and aims to enable the participants to comprehend the procedures
- through situation-based discussions and tactical exercises.
- The exercise will also showcase weapons and equipment of the Indian origin promoting 'Atmanirbharta' and indigenous capabilities in defence production.

4. d

Hybrid Warfare

Western intelligence agencies accuse Russia of increasingly engaging in hybrid warfare since invading Ukraine.

- Hybrid warfare means broadening military operations to include the following:
 1. Espionage
 2. Sabotage and cyberattacks
 3. Engaging in election interference
 4. Propaganda or disinformation campaigns
 5. Destabilise the enemy from within.
- Experts say Russia has continuously expanded its hybrid warfare arsenal in recent years.

- **Espionage** – European countries have expelled around 500 Russian diplomats since early 2022.
- Many Russian embassies and consulates are reported to be equipped with state-of-the-art communications and espionage technology.
- If any of this can be definitively proven, Western intelligence agencies have chosen not to make public the information they may have gathered.
- **Sabotage** – Recently a Russian-captained Chinese freighter reportedly damaged two undersea cables by dragging an anchor over the seabed.
- **Cyberattacks** – Germany's Federal Office for Information Security (BSI) has recently warned the risk of malicious cyberspace activity is "higher than ever."
- Online espionage and sabotage are ever-present.
- "Before Russia's attack on Ukraine, Russian-linked groups were very active in Germany engaging in cyberespionage and financially motivated ransomware attacks.
- "The scope of threats has expanded since Russia launched its war of aggression against Ukraine.
- **Disinformation and propaganda** – Another objective of hybrid warfare is trying to influence public opinion in a given target country.
- Falsehoods and pro-Russian or anti-Ukrainian narratives are disseminated to this end, whether on social media platforms through troll factories, or via Russian foreign media outlets.
- In early 2024, Germany's Foreign Ministry uncovered a Russian "Doppelganger" disinformation campaign.
- **Election interference, meddling in the political process** – One of the aims of these disinformation campaigns is to undermine public support for Ukraine.
- Another objective consists of politically destabilizing a democratic target country by strengthening extreme parties and candidates, for example by providing financial support to them.
- Western intelligence agencies also accused Russia of directly or indirectly influencing dozens of elections across Europe, North America and South America.

- **Targeted killings** – Assassinating influential figures is another facet of hybrid warfare.
- Russian President Vladimir Putin has not shied away from attacking individuals abroad.

03-12-2024

1) Consider the following statements with respect to Independent Director Databank (IDDB)

1. It serves as a repository of professionals eligible to serve as Independent Directors.
2. It is mandated under the Banking Regulation Act, 1949.
3. It was developed by the Federation of Indian Chambers of Commerce and Industry (FICCI).

How many of the statements given above are correct?

- a. Only one
- b. Only two
- c. All three
- d. None of the above

2) Centre for Processing Accelerated Corporate Exit (C-PACE), sometimes seen in the news recently, is an initiative of?

- a. Ministry of Corporate Affairs
- b. Ministry of Labour and Employment
- c. Ministry of Cooperation
- d. Ministry of Commerce and Industry

3) Consider the following statements with respect to Exercise Agni Warrior, 2024

1. It is a bilateral exercise between the Indian Army and Singapore Armed Forces.
2. It was held at Field Firing Ranges, Devlali of Maharashtra.

Which of the following statement(s) is/are correct?

- a. 1 only
- b. 2 only
- c. Both 1 and 2
- d. Neither 1 nor 2

4) Consider the following statements with respect to Candidatus Phytoplasma

1. It is a cell wall-lacking Mollicutes bacteria that affects the sesame fields of Midnapore in West Bengal.
2. It can thrive in the nutrient-rich phloem and sieve cells of plants.

Which of the following statement(s) is/are correct?

- a. 1 only
- b. 2 only
- c. Both 1 and 2
- d. Neither 1 nor 2

Answer

1. a

Independent Director Databank (IDDB)

Indian Institute of Corporate Affairs (IICA) has recently hosted the MoU Signing Ceremony with Executive Search Leaders, an important step for IDDB in facilitating the appointment of qualified Independent Directors.

- The Independent Director Databank (IDDB) serves as a repository of professionals, who are eligible to serve as Independent Directors.
- ***It is mandated under the Companies (Appointment and Qualification of Directors) Rules, 2014. (Statement 2 is incorrect)***
- Registration with the databank and completion of a proficiency assessment are *mandatory* for all Independent Directors under these rules.
- ***IDDB was developed by the Ministry of Corporate Affairs along with Indian Institute of Corporate Affairs (IICA) in accordance with the provisions of Section 150 of the Companies Act, 2013. (Statement 3 is incorrect)***
- The Indian Institute of Corporate Affairs (IICA), under the Ministry of Corporate Affairs hosted the MoU Signing Ceremony with Executive Search Leaders.
- The MoUs were signed with 6 leading executive search firms that include Korn Ferry, ABC Consultants, EMA Partners Limited, DHR Global, Sheffield Haworth and Vahura.

2. a

Centre for Processing Accelerated Corporate Exit (C-PACE)

Recently the Ministry of Corporate Affairs (MCA) has expedited the corporate exit process from 180 days to 100 days in the current financial year through its C-PACE.

- C-PACE is in operation through the Registrar of Companies (RoC) for the purposes of exercising functional jurisdiction of processing and disposal of applications.
- It is an initiative of **Ministry of Corporate Affairs**.
- It was set up for the *purposes of exercising functional jurisdiction of processing and disposal of applications.*
- It aids to centralise the process of striking off companies from the register of the Ministry of Corporate Affairs.
- It is *situated at Indian Institute of Corporate Affairs (IICA).*
- It will help to reduce the stress on the Registry along with keeping the registry clean besides availability of more meaningful data to the stakeholders.
- The C-PACE will also benefit the stakeholders by providing a hassle-free filing, timely and process-bound striking off their company's names from the Register.
- The setting up of the C-PACE is part of the several measures taken by MCA in the recent past towards **Ease of Doing Business** and ease of exit for the Companies.

3. c

Exercise Agni Warrior, 2024

The 13th edition of Joint Military Exercise AGNI WARRIOR (XAW-2024) was recently concluded at Field Firing Ranges, Devlali of Maharashtra.

- Exercise AGNI WARRIOR (XAW-2024) is 13th edition of Joint **Military Exercise** between the **Indian Army and Singapore Armed Forces**.
- It is a 3 day exercise that was held at Field Firing Ranges, Devlali of Maharashtra.
- The aim of XAW-2024 was to *maximise mutual understanding of drills and procedures* to achieve joint-ness as a multinational force under the United Nations Charter.
- The exercise showcased joint firepower planning, execution and use of New Generation Equipment by the Artillery of both Armies.

- The Exercise involved extensive joint preparation, coordination, understanding of each other's capabilities, procedures.
- It marked the culmination of successful training by Singapore Armed Forces troops exposing them to intricacies of Fire Power planning.
- Both sides utilised niche technologies during the exercise and exchanged best practices as part of the joint training.

4. c

Candidatus Phytoplasma is a newly identified microbe affecting sesame plants in West Bengal, India.

- *Candidatus Phytoplasma* is a *cell wall-lacking Mollicutes bacteria* that affects the sesame fields in sesame fields of Midnapore in West Bengal.
- These bacteria reside in the gut of phloem-sucking insects like leafhoppers and plant-hoppers.
- They thrive in the nutrient-rich phloem and sieve cells of plants.
- **Disease Symptoms** – Sesame plants revert from flowering/fruitlet stage back to vegetative state.
- White flowers with pinkish tinges turn green.
- Floral parts become disfigured and take on a leafy appearance.
- **Transmission** – Primarily spread through phloem feeder insects
- Can infect various commercially valuable crops including tobacco, maize, grapevine, and Catharanthus.
- **Sesame** – Sesame is considered the "Queen of Oil" with ancient origins traced back to Harappa and Mohenjodaro.
- The crop has medicinal benefits, including antioxidants and heart-healthy properties.
- Indian sesame varieties are being improved through molecular marker-assisted breeding.

04-12-2024

1) Consider the following statements with respect to the Serious Fraud Investigation Office (SFIO)

1. They can detect, prosecute and recommend for prosecution on white-collar crimes.

2. It is a multi-disciplinary organization that works under aegis of the Ministry of Home Affairs.
3. It is headed by a Director as Head of Department in the rank of Joint Secretary to the Government of India.

How many of the statements given above are correct?

- a. Only one
- b. Only two
- c. All three
- d. None of the above

2) Consider the following statements with respect to Exercise HARIMAU SHAKTI

1. It is a joint military exercise between India and Malaysia.
2. The Exercise will take place at Umroi Cantonment in Meghalaya, India.

Which of the following statement(s) is/are **incorrect**?

- a. 1 only
- b. 2 only
- c. Both 1 and 2
- d. Neither 1 nor 2

3) Consider the following statements with respect to Moinuddin Chishti

1. Chishti order in India was founded by him.
2. The Urs festival is an annual festival held at Ajmer, commemorates the death anniversary Moinuddin Chishti.
3. He accepted Qutubuddin Bakhtiyar Kaki as his first follower, who established the Chishti order base in Delhi.

How many of the statements given above are correct?

- a. Only one
- b. Only two
- c. All three
- d. None of the above

Answers

1.b

Serious Fraud Investigation Office (SFIO)

SFIO has recently conducted search operations at three companies engaged in manufacturing of Electric Vehicles (EVs).

- Serious Fraud Investigation Office (SFIO) was established through the **Companies Act, 2013**.
- It is a multi-disciplinary organization that **works under the aegis of Ministry of Corporate Affairs**. (Statement 2 is incorrect)
- It consists of experts in the field of accountancy, forensic auditing, banking, law, information technology, investigation, company law, capital market, taxation and so on.
- They can detect and prosecute or recommend for prosecution in white-collar crimes/frauds.
- *SFIO is headed by a Director as Head of Department in the rank of Joint Secretary to the Government of India.*
- The Director is assisted by Additional Directors, Joint Directors, Deputy Directors, Senior Assistant Directors, Assistant Directors Prosecutors, and other secretarial staff.
- The Headquarter of SFIO is in New Delhi, with five Regional Offices in Mumbai, New Delhi, Chennai Hyderabad and Kolkata.

2.b

Exercise HARIMAU SHAKTI

- Exercise HARIMAU SHAKTI, is the 4th edition of **India & Malaysia Joint Military Exercise**.
- It will commence at **Bentong camp, Pahang district, Malaysia**. (Statement 2 is incorrect)
- Aim of the Joint Exercise is to enhance joint military capability of both sides to **undertake counter insurgency operations in jungle terrain** under Chapter VII of the United Nations Mandate.
- The exercise will focus on operations in the jungle environment.
- It is an **annual training event** conducted alternatively in India and Malaysia.

- Indian contingent comprising of 78 personnel is being represented by a Battalion of MAHAR Regiment.
- Last edition was conducted in Nov 2023 at Umroi Cantonment in Meghalaya, India.
- It will enable both sides to share best practices in Tactics, Techniques and Procedures of conducting joint operations.
- It will facilitate developing inter-operability bonhomie and camaraderie between the two armies.
- The Joint Exercise will also enhance defence cooperation, further augmenting bilateral relations between the two friendly nations.

3. c

Moinuddin Chishti

- Khwaja Moinuddin Chishti, also known as Moinuddin Chishtior Moinuddin Hasan Chishti was born in Sijistan (modern-day Sistan) in **Iran in 1141-42 CE**.
- Khwaja Moinuddin Chishti started living and preaching in Ajmer after the defeat of Prithviraj Chauhan in the Second Battle of Tarain (1192) by Muizzuddin Muhammad bin Sam of Ghor.
- His instructive discourses, full of spiritual insights, soon drew the local populace as well as kings and nobles and peasants and the poor from far and wide.
- His shrine in Ajmer has been visited by rulers such as Muhammad bin Tughlaq, Sher Shah Suri, Akbar, Jahangir, Shah Jahan, Dara Shukoh and Aurangzeb.
- Moinuddin accepted **accepted Qutubuddin Bakhtiyar Kaki as his first follower, who established the Chishti order base in Delhi**.

The Urs festival is an annual festival held at Ajmer of Rajasthan which commemorates the death anniversary Moinuddin Chishti.

- **Chishti Order (Chishtiya)** – It emphasised the doctrine of the unity of being with God (wa?dat al-wujud) and members of the order were also pacifists.
- *Chishtiya Order was founded in India by Khwaja Moin-Uddin Chishti or Moinuddin Chishti.*
- They **rejected all material goods** as distractions from the contemplation of God.

- They abstained from connection with the secular state.
- Recitation of the names of God, both aloud and silently (dhikr jahri, dhikr khafi), formed the cornerstone of Chishti practice.
- The Chishty teachings were carried forward and popularized by disciples of Khwaja Moin-Uddin Chishti like Khwaja Qutbuddin Bakhtiyar Kaki, Fareeduddin Ganj-e-Shakar, Nizam uddin Auliya and Naseeruddin Charagh.

05-12-2024

1) 'Trade Watch Quarterly', sometimes seen in the news recently, is an initiative of?

- a. Ministry of Finance
- b. NITI Aayog
- c. Reserve of India
- d. National Institute of Public Finance and Policy

2) Consider the following statements with respect to International Centre for Integrated Mountain Development

1. It is an intergovernmental organization that works to improve the lives of people in the Hindu Kush Himalaya (HKH) region.
2. It spans 8 regional member countries including India.

Which of the statement(s) mentioned above is/are correct?

- a. 1 only
- b. 2 only
- c. Both 1 and 2
- d. Neither 1 nor 2

3) Fluorescence in-situ hybridisation (FISH), sometimes seen in the news recently, is associated with?

- a. Map DNA sequences on chromosomes.
- b. A method used by public notary to affixing his/her seal.
- c. The primary method of teaching under the New India Literacy Programme.
- d. A method that allows to secure tokens for prepaid funds.

1. b

Trade Watch Quarterly

NITI Aayog has recently launched the 'Trade Watch Quarterly' recently.

- Trade Watch Quarterly will be a periodic publication focusing on India's trade developments and emerging opportunities.
- NITI Aayog has recently published Trade Watch Quarterly, which analyses India's trade statistics for the first quarter of the financial year 2024 (April to June).
- The trade watch publication offers a holistic snapshot of India's trade position, combining global demand-supply perspectives, sectoral performance and insights into emerging trade opportunities.
- **Key highlights of the report** – During Q1 FY'24, India's trade performance demonstrated stability and moderate growth.
- Total trade stood at USD 576 billion, registering a 5.45% year-on-year increase.
- Merchandise exports showed restrained growth, influenced by declines in critical sectors such as iron and steel, as well as natural and cultured pearls.
- On the other hand, imports were propelled by high-value commodities, including aircraft, spacecraft, mineral fuels and vegetable oils.
- Services exports displayed an encouraging surplus.

2. c

International Centre for Integrated Mountain Development (ICIMOD)

- ICIMOD is an intergovernmental organization that works to improve the lives of people in the **Hindu Kush Himalaya (HKH) region** and protect the resources and culture that define it.
- **Founded in** – 1983.
- **Location** – It is based in Kathmandu, Nepal.

Hindu Kush Himalaya mountain range spans 8 countries and stretches 3,500km across Asia.

- **Associated countries** – ICIMOD works with 8 regional member countries: Afghanistan, Bangladesh, Bhutan, China, India, Myanmar, Nepal and Pakistan.

Answer

- **Working** – Promoting the development of a sustainable mountain ecosystem
- Improving the living standards of people in the mountains.
- Conserving and managing the region's biodiversity.
- Preparing for disasters and monitoring the environment.
- **Funding** – The governments of Austria, Denmark, Germany, Netherlands, Norway, and Switzerland.
- Regional member countries can also fund the ICIMOD.
- **India's role in ICIMOD** – India is one of the founding member country of ICIMOD.
- The Ministry of Environment, Forests and Climate Change (MoEF&CC) is the nodal Ministry in India.

3. a

Fluorescence in situ hybridization (FISH)

- Fluorescence in situ hybridization (FISH) is a laboratory technique that uses fluorescent probes to identify and map DNA sequences on chromosomes.
- **Working** – A set of chromosomes is attached to a glass slide and exposed to a fluorescently labeled DNA probe.
- The probe binds to its matching sequence on the chromosomes, and a special microscope can be used to see the location of the probe.
- **Uses** – FISH is used to diagnose genetic disorders, such as cystic fibrosis, Duchenne's muscular dystrophy, and leukemia.
- It can also be used to detect chromosomal abnormalities before or after birth, or in embryos during preimplantation genetic testing.
- **Benefits** – FISH provides quantitative information about the distribution of nucleic acids in cells and can also provide spatial information about cellular content.

07-12-2024

1) Consider the following statements with respect to the Pavement Condition Index (PCI)

1. It is a scientific metric ranging from 0 to 100, reflecting pavement conditions from 'Excellent' to 'Failed'.

2. It will be calculated based on six functional parameters that include roughness, potholes, cracking, Ravelling, Rut Depth and Patchwork.

Which of the statements given above is/are correct?

- a. 1 only
- b. 2 only
- c. Both 1 and 2
- d. Neither 1 nor 2

2) Consider the following statements:

1. All the National Highways of the development projects of Ministry of Road Transport and Highways are planned in line with PM Gati-Shakti National Master Plan Principles.
2. The electronic Detailed Accident Report (e-DAR) is a central repository for reporting, management and analysis of road accidents data across the Country.

Which of the statements given above is/are correct?

- a. 1 only
- b. 2 only
- c. Both 1 and 2
- d. Neither 1 nor 2

3) Consider the following statements with respect to Green Tug Transition Program (GTTP)

1. It aims to transition India's harbour tug fleet from conventional diesel-powered vessels to greener alternatives.
2. It was launched on August 2024 and is directly aligned with the Maritime Amrit Kaal Vision 2047.
3. It was announced as a part of Panch Karma Sankalp.

How many of the statements given above are correct?

- a. Only one
- b. Only two
- c. All three
- d. None of the above

4) Consider the following statements with respect to Malayan Sun Bear

1. It is the smallest member of the bear family and are primarily nocturnal.
2. They can hibernate all year around.
3. It is listed as vulnerable under the International Union for Conservation of Nature (IUCN)'s red list.

How many of the statements given above are correct?

- a. Only one
- b. Only two
- c. All three
- d. None of the above

5) Fleming Fund, sometimes seen in the news recently, is associated with?

- a. Strengthening AMR surveillance networks.
- b. Reduction of poverty in urban cities.
- c. Protection of bird species and wetlands.
- d. Funding of infrastructure project.

Answers

1. c

Pavement Condition Index (PCI)

- Pavement Condition Index (PCI) is a scientific metric ranging from **0 to 100**, reflecting pavement conditions from 'Excellent' to 'Failed'.
- PCI will be calculated based on **6 functional parameters** that include roughness, potholes, cracking, Ravelling, Rut Depth and Patchwork.
- The data for PCI value will be calculated using the latest technology such as *Laser Crack Measurement Systems* through *Network Survey Vehicles (NSV)*.
- PCI will be surveyed and processed through centrally deployed agencies by NHAI under supervision of a dedicated team.

2.c

PM Gati Shakti-National Master Plan (NMP)

- PM GatiShakti National Master Plan (PMGS-NMP) was launched on October 2021 for providing multimodal connectivity infrastructure to various economic zones.

- Cabinet Committee on Economic Affairs (CCEA) accorded approval for the implementation of PM Gati-Shakti National Master Plan on 21st October 2021.
- The Union Government in the Ministry of Road Transport and Highways (MoRTH) is primarily responsible for development and maintenance of National Highways (NHs).
- All the NHs development projects of MoRTH are planned in line with PM GatiShakti National Master Plan (NMP) Principles.
- PM GatiShakti is a transformative approach for economic growth and sustainable development. The approach is driven by 7 engines, namely:
 1. Railways
 2. Roads
 3. Ports
 4. Waterways
 5. Airports
 6. Mass Transport
 7. Logistics Infrastructure

- All 7 engines will pull forward the economy in unison.

- **electronic Detailed Accident Report (e-DAR) Project** – Is a central repository for reporting, management and analysis of road accidents data across the Country.

- It is administered by the Ministry of Road Transport and Highways (MoRTH).

3.c

Green Tug Transition Program (GTTP)

- The Green Tug Transition Program (GTTP) aims to transition India's harbour tug fleet from conventional diesel-powered vessels to greener alternatives.
- The GTTP was launched on **August 16, 2024**.
- This is achieved through a *phased approach* spanning **5 phases** from 2024 to 2040.
- The transition is designed to be seamless, allowing for a gradual *phasing out of traditional tugs*.
- Four major ports have been selected in Phase 1 of GTTP with the target of procuring/hiring at least two green tugs by each port.

- The GTTP is **directly aligned with the Maritime Amrit Kaal Vision 2047**, which aims to reduce GHG emissions from port vessels by **30% by 2030**.
- To know more about Maritime Amrit Kaal Vision 2047 [click here](#)
- The GTTP's focus on reducing emissions from harbour tugs contributes significantly to this broader goal.
- Green Tug Transition Program is a part of Panch Karma Sankalp.
- **Panch Karma Sankalp** – The 'Panch Karma Sankalp' includes 5 major announcements which are:
 1. MoPSW to provide 30% financial support for the promotion of Green Shipping.
 2. Under the Green Tug Transition Programme Jawaharlal Nehru Port, VO Chidambaranar Port, Paradip Port and Deendayal Port, Kandla will procure two tugs each.
 3. Deendayal Port and VO Chidambaranar Port, Tuticorin to be developed as Green Hydrogen Hub.
 4. Single Window Portal to facilitate and monitor river and sea cruises.
 5. Jawaharlal Nehru Port and VO Chidambaranar Port, Tuticorin to become smart port by next year.

4.b

Malayan Sun Bear (*Helarctos malayanus*)

- The Malayan Sun bear, or the Sun bear is the *smallest member of the bear family*.
- They are easily distinguishable by their bib-shaped golden or white patch on their chest.
- Sun bears are *primarily nocturnal*, but daytime activity has been observed in this species.
- The Malayan Sun Bear **do not hibernate**.
- **Range** – It can be found from southern China to **eastern India** and as far south as Indonesia.
- **Habitat** – Tropical forest, shrub lands and artificial/terrestrial lands.
- **Protection** – They listed as **vulnerable** under the International Union for Conservation of Nature (IUCN)'s red list.

- **Threat** – Sun bear currently faces multiple threats on a regional and national level that include habitat loss, population fragmentation, illegal hunting and trading for traditional medicine and delicacies.



5.a

Fleming Fund

- Fleming Fund is a U.K. Department of Health and Social Care program to help low- and middle-income countries *to fight antimicrobial resistance (AMR)*.
- It provides supports for training of trainers on infection prevention and control (IPC).
- It also strengthens AMR surveillance networks and conducts surveys on antibiotic use in tertiary hospitals.
- Fleming Fund is part of National Centre for Disease Control (NCDC) Collaborations.
- **National Centre for Disease Control (NCDC) Collaborations** – NCDC collaborates with global organizations and countries to address AMR, focusing on AMR surveillance, capacity building, and specialized lab testing.
- Notable international collaborations include:
 - **India-US CDC Partnership** – Focused on AMR surveillance, SOP development, and data management using WHONET (World Health Organization (WHO) Network) software.
 - **USAID (United States Agency for International Development) Collaboration** – Focused on strengthening AMR containment in six states.
 - **Indo-Netherlands Collaboration** – Pilot project in Andhra Pradesh integrating AMR

surveillance with a One Health approach.

- **India-Denmark Collaboration** – A recent technical collaboration plan to address AMR.

09-12-2024

1) Anna Chakra, sometimes seen in the news recently, is associated with?

- Optimisation tool for Public Distribution System across India.
- A concept in Buddhism that refers to energy centres in the body.
- Nanoparticles that show significant promise in drug delivery.
- An operation to provide maritime safety to Indian ships in Red Sea.

2) Consider the following statements with respect to India Internet Governance Forum (IIGF)

- It is a multi-stakeholder community aims to explore critical aspects of Internet governance and foster meaningful dialogue in the global digital landscape.
- It is the Indian chapter of the United Nations Internet Governance Forum (UNIGF).
- United Nations Internet Governance Forum (IGF) serves to bring people together from various stakeholder groups in discussions on digital public policy.

How many of the statements given above are correct?

- Only one
- Only two
- All three
- None of the above

3) Consider the following statements with respect to Armed Forces Flag Day Fund (AFFDF)

- AFFDF is a fund that supports the welfare of the Indian Defence Forces' ex-servicemen, their families and dependents.
- Department of Military Affairs (DMA) is responsible for administration of AFFDF.
- Contributions to AFFDF can be made only through cheque and demand draft.

How many of the statements given above are correct?

- Only one
- Only two
- All three
- None of the above

Answers

1.a

Anna Chakra

The Union Minister of Consumer Affairs, Food and Public Distribution has recently launched 'Anna Chakra', the Public Distribution System (PDS) Supply chain optimisation tool.

- Anna Chakra aims to enhance the efficiency of the Public Distribution System (PDS) logistics network across the country.
- It is developed in collaboration with the *World Food Programme (WFP)* and *Foundation for Innovation and Technology Transfer (FITT), IIT-Delhi*.
- The project leverages advanced algorithms to identify optimal routes and ensure seamless movement of food grains across supply chain nodes.
- The *tool uses advanced algorithms* to streamline the movement of food grains across the supply chain.
- QKM (quantity in quintal x distance in KMs)** – Is the key metric of this exercise which is quantity in quintal multiplied by distance in kilometres (QKM).
- Anna Chakra has reduced QKM by 580 million units.
- Benefits** – It helps improve the speed and efficiency of the world's largest food security program providing food safety net to *81 Crore beneficiaries*.
- It can *improve efficiency and cut cost* through the streamlined delivery routes reducing fuel consumption, time, and logistics costs,
- It also provides environmental benefits by *lowering carbon footprint* due to reduced transportation-related emissions.

2.c

India Internet Governance Forum (IIGF)

IIGF 2024 is held at New Delhi that aims to explore critical aspects of Internet governance, foster

meaningful dialogue and highlight India's leadership in the global digital landscape.

- India Internet Governance Forum (IIGF) was established on 2021 to promote collaborative discussions among representatives from government, civil society, industries, technical communities, think tanks and industry associations.
- It is supported by a 14-member multi-stakeholder committee to maximize the opportunities of the Internet while addressing associated challenges and risks.
- **IIGF, 2024** – Is the 4th edition of with the theme “Innovating Internet Governance for India”.
- IIGF 2024 will address critical themes to advance a secure, inclusive, and sustainable digital ecosystem.
- The forum will focus on bridging the digital divide, enhancing trust and safety in the online environment.
- It is supported by the Ministry of Electronics and Information Technology (MeitY) and the National Internet Exchange of India (NIXI).
- The discussions will focus on Empowering Connections, emphasizing enhanced access, inclusion, and digital rights to bridge the digital divide.
- IIGF is the Indian chapter of the United Nations Internet Governance Forum (UN IGF).
- **United Nations Internet Governance Forum (IGF)** – Serves to bring people together from various stakeholder groups in discussions on digital public policy.
- While it does not produce negotiated outcomes, the IGF informs and inspires those with policy-making power in both the public and private sectors.
- The IGF includes policy, outreach, and community and capacity-building activities.
- IGF intersessional work culminates in annual meetings, where delegates discuss current and critical issues, share good practices and exchange policy recommendations with one another.
- Annual IGFs are convened by the UN Secretary-General and supported by a different host country each year.
- The upcoming 2024 IGF will be held Riyadh, Kingdom of Saudi Arabia, following the 2023 IGF in Kyoto, Japan.

3.a

Armed Forces Flag Day Fund (AFFDF)

Raksha Mantri has recently urged people to contribute generously to Armed Forces Flag Day Fund.

- The Armed Forces Flag Day Fund (AFFDF) is a fund that supports the welfare of the Indian Defence Forces' ex-servicemen, their families and dependents.
- It is used to provide for a range of welfare activities, including:
 - **Financial Assistance** – For the families of martyrs, ex-servicemen, and those who are disabled due to their service.
 - **Educational Schemes** – Scholarships and educational support for the children of armed forces personnel.
 - **Medical Aid** – Free or subsidised medical care for soldiers and veterans.
 - **Housing Schemes** – Providing housing support for veterans and families of fallen soldiers.
- Since 1949, 7th December is observed as the Armed Forces Flag Day throughout the country to honour the martyrs.
- The day serves as a reminder that the bravery and commitment of the armed forces ensure the safety of the country and that every citizen has to support them.
- The Fund also supports various rehabilitation programs for veterans, providing them with the resources and tools they need to adjust to life after service.
- The AFFDF is **operated by a Managing Committee, headed by Hon'ble Raksha Mantri at the Centre** and Hon'ble Governor / Lt Governor at the State / UT level.
- **Contributions to AFFDF** can be made using any of the following **4 means**, such as: **(Statement 3 is incorrect)**
 - By **cheque / demand draft** drawn in favour of "Armed Forces Flag Day Fund.
 - **Online** through RTGS/NEFT.
 - Online through website of KSB.
- **Kendriya Sainik Board (KSB)** – Is responsible for administration of AFFDF. **(Statement 2 is incorrect)**

- Kendriya Sainik Board is an apex body of India that formulates and operates various welfare and rehabilitation schemes for Ex Servicemen (ESM) and their dependents.
- It operates through a network of 32 Rajya Sainik Boards (RSBs) and 385 Zila Sainik Boards (ZSBs) co-located in the State Capitals and District HQs respectively, across the country.

09-12-2024

1) Anna Chakra, sometimes seen in the news recently, is associated with?

- a. Optimisation tool for Public Distribution System across India.
- b. A concept in Buddhism that refers to energy centres in the body.
- c. Nanoparticles that show significant promise in drug delivery.
- d. An operation to provide maritime safety to Indian ships in Red Sea.

2) Consider the following statements with respect to India Internet Governance Forum (IIGF)

1. It is a multi-stakeholder community aims to explore critical aspects of Internet governance and foster meaningful dialogue in the global digital landscape.
2. It is the Indian chapter of the United Nations Internet Governance Forum (UNIGF).
3. United Nations Internet Governance Forum (IGF) serves to bring people together from various stakeholder groups in discussions on digital public policy.

How many of the statements given above are correct?

- a. Only one
- b. Only two
- c. All three
- d. None of the above

3) Consider the following statements with respect to Armed Forces Flag Day Fund (AFFDF)

1. AFFDF is a fund that supports the welfare of the Indian Defence Forces' ex-servicemen, their families and dependents.
2. Department of Military Affairs (DMA) is responsible for administration of AFFDF.

3. Contributions to AFFDF can be made only through cheque and demand draft.

How many of the statements given above are correct?

- a. Only one
- b. Only two
- c. All three
- d. None of the above

Answers

1.a

Anna Chakra

The Union Minister of Consumer Affairs, Food and Public Distribution has recently launched 'Anna Chakra', the Public Distribution System (PDS) Supply chain optimisation tool.

- Anna Chakra aims to enhance the efficiency of the Public Distribution System (PDS) logistics network across the country.
- It is developed in collaboration with the *World Food Programme (WFP)* and *Foundation for Innovation and Technology Transfer (FITT), IIT-Delhi.*
- The project leverages advanced algorithms to identify optimal routes and ensure seamless movement of food grains across supply chain nodes.
- The *tool uses advanced algorithms* to streamline the movement of food grains across the supply chain.
- **QKM (quantity in quintal x distance in KMs)** – Is the key metric of this exercise which is quantity in quintal multiplied by distance in kilometres (QKM).
- Anna Chakra has reduced QKM by 580 million units.
- **Benefits** – It helps improve the speed and efficiency of the world's largest food security program providing food safety net to 81 Crore beneficiaries.
- It can *improve efficiency and cut cost* through the streamlined delivery routes reducing fuel consumption, time, and logistics costs,
- It also provides environmental benefits by *lowering carbon footprint* due to reduced transportation-related emissions.

2.c

India Internet Governance Forum (IIGF)

IIGF 2024 is held at New Delhi that aims to explore critical aspects of Internet governance, foster meaningful dialogue and highlight India's leadership in the global digital landscape.

- India Internet Governance Forum (IIGF) was established on 2021 to promote collaborative discussions among representatives from government, civil society, industries, technical communities, think tanks and industry associations.
- It is supported by a 14-member multi-stakeholder committee to maximize the opportunities of the Internet while addressing associated challenges and risks.
- **IIGF, 2024** – Is the 4th edition of with the theme “Innovating Internet Governance for India”.
- IIGF 2024 will address critical themes to advance a secure, inclusive, and sustainable digital ecosystem.
- The forum will focus on bridging the digital divide, enhancing trust and safety in the online environment.
- It is supported by the Ministry of Electronics and Information Technology (MeitY) and the National Internet Exchange of India (NIXI).
- The discussions will focus on Empowering Connections, emphasizing enhanced access, inclusion, and digital rights to bridge the digital divide.
- IIGF is the Indian chapter of the United Nations Internet Governance Forum (UN IGF).
- **United Nations Internet Governance Forum (IGF)** – Serves to bring people together from various stakeholder groups in discussions on digital public policy.
- While it does not produce negotiated outcomes, the IGF informs and inspires those with policy-making power in both the public and private sectors.
- The IGF includes policy, outreach, and community and capacity-building activities.
- IGF intersessional work culminates in annual meetings, where delegates discuss current and critical issues, share good practices and exchange policy recommendations with one another.
- Annual IGFs are convened by the UN Secretary-General and supported by a different host country each year.

- The upcoming 2024 IGF will be held Riyadh, Kingdom of Saudi Arabia, following the 2023 IGF in Kyoto, Japan.

3.a

Armed Forces Flag Day Fund (AFFDF)

Raksha Mantri has recently urged people to contribute generously to Armed Forces Flag Day Fund.

- The Armed Forces Flag Day Fund (AFFDF) is a fund that supports the welfare of the Indian Defence Forces' ex-servicemen, their families and dependents.
- It is used to provide for a range of welfare activities, including:
 - **Financial Assistance** – For the families of martyrs, ex-servicemen, and those who are disabled due to their service.
 - **Educational Schemes** – Scholarships and educational support for the children of armed forces personnel.
 - **Medical Aid** – Free or subsidised medical care for soldiers and veterans.
 - **Housing Schemes** – Providing housing support for veterans and families of fallen soldiers.
- Since 1949, 7th December is observed as the Armed Forces Flag Day throughout the country to honour the martyrs.
- The day serves as a reminder that the bravery and commitment of the armed forces ensure the safety of the country and that every citizen has to support them.
- The Fund also supports various rehabilitation programs for veterans, providing them with the resources and tools they need to adjust to life after service.
- The AFFDF is **operated by a Managing Committee, headed by Hon'ble Raksha Mantri at the Centre** and Hon'ble Governor / Lt Governor at the State / UT level.
- **Contributions to AFFDF** can be made using any of the following **4 means**, such as: (**Statement 3 is incorrect**)
 - By **cheque / demand draft** drawn in favour of "Armed Forces Flag Day Fund.
 - **Online** through RTGS/NEFT.
 - Online through website of KSB.

- **Kendriya Sainik Board (KSB)** – Is responsible for administration of AFFDF. (**Statement 2 is incorrect**)
- Kendriya Sainik Board is an apex body of India that formulates and operates various welfare and rehabilitation schemes for Ex Servicemen (ESM) and their dependents.
- It operates through a network of 32 Rajya Sainik Boards (RSBs) and 385 Zila Sainik Boards (ZSBs) co-located in the State Capitals and District HQs respectively, across the country.

10-12-2024

1) Consider the following statements with respect to Seed Ball Plantation

1. It is a Japanese technique that is considered as a natural method of farming that requires no machines, no chemicals and very little weeding.
2. By using seed balls, lands are cultivated without any preparation of soil.

Which of the statements given above is/are correct?

- a. 1 only
- b. 2 only
- c. Both 1 and 2
- d. Neither 1 nor 2

2) 'Amrit Gyaan Kosh' Portal, sometimes seen in the news recently, is associated with?

- a. To strengthen governance training.
- b. Education magazine about space for school children.
- c. To address the new and emerging concerns affecting consumers.
- d. An online learning platform for the Indian Army.

3) Consider the following statements with respect to Data for Development Coordination Forum (DDCF) on SDGs

1. It is tasked with developing data plans, enhancing the indicator framework for SDGs through comprehensive stakeholder reviews.
2. It was established by Ministry of Electronics and Information Technology.

3. It is co-chaired by the Union Minister of Electronics and Information Technology and Vice Chairman of NITI Aayog.

How many of the statements given above are correct?

- a. Only one
- b. Only two
- c. All three
- d. None of the above

4) Siang River, sometimes seen in the news recently, flows through?

- a. Arunachal Pradesh and Assam
- b. Assam and Meghalaya
- c. Assam and Nagaland
- d. Manipur and Mizoram

5) Consider the following statements with respect to Amur Tiger

1. It is one of the large cats in the world that are endemic to Russia.
2. They are listed as Endangered under the red list of the International Union for Conservation of Nature.

Which of the statements given above is/are correct?

- a. 1 only
- b. 2 only
- c. Both 1 and 2
- d. Neither 1 nor 2

Answers

1.c

Seed Ball Plantation

In recent times, in addition to traditional methods of plantation, some of the innovative techniques being adopted by Coal & Lignite PSUs include seed ball plantation, Miyawaki plantation and so on.

- Seed ball planting method is also called as **Fukuoka technique** that was developed by a Japanese farmer and philosopher Masanobu Fukuoka in southern Japan.

- The technique is considered as a natural method of farming that requires no machines, no chemicals and very little weeding.
- By using seed balls, lands are cultivated without any preparation of soil.
- This kind of cultivation is highly useful for re-vegetation of decertified lands, and protects soil from erosion and climate risks such as landslides.
- **Fukuoka technique** uses minimal human interventions allowing ecosystems to determine the yield of the land for nurturing more resilient trees, healthier soil, plant diversity and a smaller work load for farmers.

The Miyawaki method is a Japanese technique for planting trees, shrubs, and groundcover plants in a dense canopy layer to create a forest.

- **Advantages of seed balls:**
- It is simple and easier to make seed balls without machines.
- Easier for reforestation and plantation in difficult terrains.
- Contribute to protect soil, environment and livelihood.
- It is an organic technique and doesn't use any chemicals.
- It is a low-cost method compared to traditional afforestation techniques.
- It requires low maintenance.

2.a

'Amrit Gyaan Kosh' Portal

The "Amrit Gyaan Kosh" Portal was recently launched to strengthen governance training.

- The "Amrit Gyaan Kosh" Portal aims to strengthen governance training.
- It is more than a repository as it is a platform to promote self-reliance in governance training.
- It can enable faculty to align their teaching with global standards while addressing India's unique administrative challenges.
- It will play a pivotal role in strengthening the public administration system and advancing India's capacity-building ecosystem.
- The launch of the dedicated portal for Amrit Gyaan Kosh on the iGOT platform, jointly

developed by the Capacity Building Commission and Karmayogi Bharat.

3.a

Data for Development Coordination Forum (DDCF) on SDGs

- The Data for Development Coordination Forum (DDCF) is tasked with developing data plans, enhancing the indicator framework through comprehensive stakeholder reviews.
- It also facilitates discussions on SDG-related issues with relevant stakeholders including Central Ministries and UN Agencies on a unified platform.
- DDCF was established by the **Ministry of Statistics and Programme Implementation (MoSPI)**. (**Statement 2 is incorrect**)
- It is **co-chaired** by the *Director General (Central Statistics) of National Statistical Office (NSO)*, MoSPI and the *UN Resident Coordinator*. (**Statement 3 is incorrect**)
- The DDCF's role includes developing data plans and fostering discussions with key stakeholders.
- **UN Resident Coordinator** – The Resident Coordinator (RC) is the *highest ranking representative of the United Nations development system (UNDS) at the country level*.
- The Resident Coordinator has the responsibility to lead United Nations country teams.
- He/she also ensures system-wide accountability on the ground for the United Nations Sustainable Development Cooperation Framework and coordinating UN support to countries in their implementation of the 2030 Agenda.
- She/he brings to the role an appreciation of the breadth of assets of the United Nations in the service of sustaining peace.
- The Resident Coordinator is the designated representative of UN and reports to the UN Secretary-General.

4. a

Siang River

- The Siang River is also known as the Yarlung Tsangpo in Tibet.

- Siang River is also known as the *Dihang River* in *Arunachal Pradesh*.
- The Brahmaputra River is known by the names Siang and Dihang.
- The Siang River, as it flows through Arunachal Pradesh, traverses steep gorges and dense forests before reaching the plains of Assam.
- In Assam, the Siang River merges with the Dibang and Lohit Rivers to form the mighty Brahmaputra River.
- This combined river flows through the states of Assam and Meghalaya before reaching Bangladesh near Dhubri or Goal Para.
- The Siang River is the largest *tributary of the Brahmaputra River* system in Northeast India.
- It *originates from the Chema Yungdung glacier near Kubi in Tibet* and ends at the Bay of Bengal in Bangladesh.
- More than 1000 kilometres is shared by India.
- The Siang River is known for its crystal clear blue water in the winter, but in recent years, the water quality has become a concern.

- **Range** – They live primarily in eastern Russia's birch forests, though some exist in China and North Korea.
- **Diet** – They are meat eaters, often found hunting deer, wild pigs, moose, hares and other animals that live in their habitat.
- **Threats** – Two critical threats to Amur tigers are hunting and deforestation.



11-12-2024

1) 'MuleHunter.AI', sometimes seen in the news recently, is an initiative of?

- a. Reserve Bank Innovation Hub
- b. OpenAI
- c. National Innovation Foundation –India
- d. IIT Jodhpur

2) Consider the following statements with respect to No-Confidence Motion

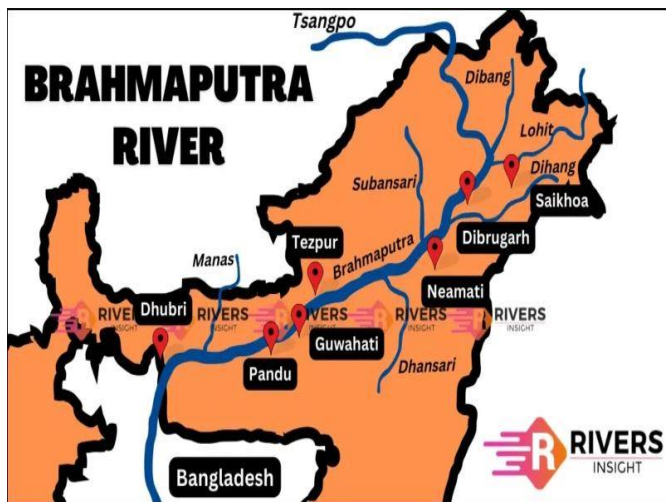
1. It is a parliamentary process that allows the opposition to challenge the government's majority and ability to govern.
2. Unlike censure motion, it need not state the reasons for its adoption in the Lok Sabha.

Which of the statements given above is/are correct?

- a. 1 only
- b. 2 only
- c. Both 1 and 2
- d. Neither 1 nor 2

3) Consider the following statements with respect to Yuva Sahakar Scheme

1. The scheme encourages young entrepreneur cooperative societies which are in operation for a minimum of one year.



5.b

Amur Tiger (*Panthera tigris altaica*)

- Amur Tiger is also known as the Siberian tiger is one of the largest cats in the world.
- In appearance, the Siberian tiger is distinguished from other tiger subspecies by its muted orange coat accented by black stripes, its thick fur and its size.
- It is considered by many experts to be the world's largest tiger (the Bengal tiger ranking second largest).

2. It is being implemented by National Cooperative Development Corporation (NCDC).

Which of the statements given above is/are **incorrect**?

- a. 1 only
b. 2 only
c. Both 1 and 2
d. Neither 1 nor 2

4) Consider the following statements with respect to Ayush Visa

1. Ayush Visa category is part of India's roadmap for the Heal in India initiative.
2. It is granted to a foreigner whose sole purpose is to seek treatment through Ayush systems like therapeutic care and Wellness in a Hospital/Wellness Centre.
3. It is available under four sub-categories, with Ayush Attendant Visa being one of them.

How many of the statements given above are correct?

- a. Only one
b. Only two
c. All three
d. None of the above

5) Consider the following statements with respect to the Rural Self Employment Training Institutes (RSETIs) Scheme

1. They are being run by banks and are well equipped to train Rural Poor Youth including Below Poverty Line (BPL) youth.
2. RSETIs develop the Annual Action Plan based on local needs and candidates' interests.

Which of the statements given above is/are correct?

- a. 1 only
b. 2 only
c. Both 1 and 2
d. Neither 1 nor 2

Answers

1. a

MuleHunter.AI

MuleHunter.AI was recently developed by the Reserve Bank Innovation Hub (RBIH) to crack down on 'mule bank accounts'.

- A mule account is a bank account that is used by criminals for illegal activities, including the laundering of illicit funds.
- A mule account is typically bought over by the criminals from their original users, individuals who are often from lower income groups, or have low levels of technical literacy.
- "**Money mule**" is used to describe the *innocent victims who are used by the criminals* to launder stolen or illegal money via their bank accounts.
- The Reserve Bank has been taking various measures in coordination with banks and other stakeholders to prevent and mitigate digital frauds in the financial sector.
- **MuleHunter.AI** – It enables detection of mule bank accounts in an efficient manner.
- It aids to deal with the issue of mule bank accounts being used for committing financial frauds.
- MuleHunter.AI was developed by the **Reserve Bank Innovation Hub (RBIH)**.

The Reserve Bank is currently also running a hackathon on the theme "Zero Financial Frauds", which includes a specific problem statement on mule accounts, to encourage development of innovative solutions.

- **Reserve Bank Innovation Hub (RBIH)** – It is a wholly-owned subsidiary of the Reserve Bank of India (RBI).
- It was set up to promote and facilitate an environment that accelerates innovation across the financial sector.
- The 4 innovation pathways include:
 1. **RBIH Build** – Develop bespoke in-house solutions, where market solutions do not exist or suffice.
 2. **RBIH Design** – Design user-centric processes and products to enable frictionless customer journeys.
 3. **RBIH Incubate** – Nurture existing fin-tech start-ups and the innovation ecosystem.
 4. **RBIH Insights** – In-depth research and insights to shape the financial innovation landscape.

Who We Work With

We collaborate with a plethora of stakeholders



2.c

No-Confidence Motion

- A no-confidence motion is a parliamentary process that allows the opposition to challenge the government's majority and ability to govern.
- *If the motion is passed, the government must resign.*
- Any member of the Lok Sabha can move a no-confidence motion and the motion must be supported by at least 50 members of the House.
- A no-confidence motion must be in writing and must be signed by the member moving it.
- **Article 92** of the Constitution, states that the Chairman or the Deputy Chairman cannot preside while a resolution for their removal from office is under consideration.

The first no-confidence motion was moved against Prime Minister Jawaharlal Nehru in 1963.

- The motion must be submitted to the Speaker of the Lok Sabha on any day on which the House is sitting.
- **Unlike censure motion, it need not state the reasons for its adoption in the Lok Sabha.**
- PM Indira Gandhi faced the most no-confidence motions (15), followed by Lal Bahadur Shastri and PV Narasimha Rao (three each).

3.a

Yuva Sahakar Scheme

- Yuva Sahakar is a cooperative enterprise support and innovation scheme, being implemented by National Cooperative Development Corporation (NCDC).
- Yuva shakar aims to *encourage newly formed cooperative societies with new innovative ideas.*
- The scheme encourages young entrepreneur Cooperative Societies which are in operation for a **minimum of 3 months. (Statement 1 is incorrect)**
- The loan provided under the scheme is a long-term loan (up to 5 years) and as an incentive, *NCDC provides 2% interest subvention* on its applicable rate of interest on term loan for the project activities.
- **National Cooperative Development Corporation (NCDC)** – It was *established by an Act of Parliament in 1963.*
- It is a statutory corporation under the administrative control of *Ministry of Cooperation.*

4.c

Ayush Visa

- The Government has introduced a separate category of Ayush Visa for foreigners visiting India for availing treatment under Ayush system of medicine.
- Ayush Visa is available under four 4 categories that include:
 1. Ayush Visa (AY-1)
 2. Ayush Attendant Visa (AY2)
 3. e-Ayush Visa
 4. e-Ayush Attendant Visa
- Ayush Visa is granted to a foreigner whose sole purpose is to seek treatment through Ayush systems like therapeutic care and Wellness in a Hospital/Wellness Centre.
- Hospital or Wellness Centre should be accredited and registered with any Government authorities such as:
 - Concerned or National Accreditation Board for Hospitals & Healthcare Providers (NABH),
 - National Commission for Homoeopathy (NCH) and
 - National Commission for Indian System of Medicine (NCISM)

accredited hospitals providing Ayush services.

- **Advantage Healthcare India portal** – It is a "One-Stop" portal developed for the facilitation of information for those who want to avail medical treatment in India from abroad.
- It was launched by the Ministry of Health and Family Welfare and it is the official portal for Medical Value Travel (MVT).
- **Ayush Medical Value Travel Summit 2024** – It aims to strengthen India's position in Medical Value Travel (MVT) by integrating traditional Indian systems of medicine with modern healthcare systems.
- 'Global Synergy in Ayush: Transforming Health and Wellness through Medical Value Travel' is the *theme* of the summit.
- It was held at **Mumbai**.

5.c

Rural Self Employment Training Institutes (RSETIs)

- Rural Self Employment Training Institutes (RSETIs) are being run by banks and are well equipped to train Rural Poor Youth including Below Poverty Line (BPL) youth.
- The RSETIs develop the Annual Action Plan based on local needs and candidates' interests.
- There are 64 approved training programs by the National Council for Vocational Education and Training (NCVET) and the Ministry of Rural Development (MoRD).
- There is no category-wise release of funds under the RSETI scheme.

12-12-2024

1) Consider the following statements with respect to Haemophilia

1. Haemophilia is a rare, inherited blood disorder that affects the blood's ability to clot.
2. 'Haemophilia A' is the more common version of the condition, is caused by the absence of a blood-clotting factor called Factor VIII.
3. Centre for Stem Cell Research (CSCR) has developed the first human gene therapy for 'Haemophilia A' in India recently.

How many of the statements given above are correct?

- a. Only one

- b. Only two
- c. All three
- d. None of the above

2) Consider the following statements with respect to the Prime Minister's WiFi Access Network Interface (PM-WANI)

1. It aims to enhance the proliferation of public WiFi hotspots to create robust digital communications infrastructure in the country, especially in rural areas.
2. Public Data Office (PDO), one of the component under the PM-WANI ecosystem provides authorisation and accounting services to PDOs.
3. It was launched by the Ministry of Electronics and Information Technology.

How many of the statements given above are correct?

- a. Only one
- b. Only two
- c. All three
- d. None of the above

3) Consider the following statements with respect to National Panchayat Awards

1. All the Panchayats will be ranked based on their performance under 9 Sustainable Development Goals (SDGs) themes.
2. Deen Dayal Upadhyay Panchayat Satat Vikas Puraskar and Carbon Neutral Vishesh Panchayat Puraskar are few of the categories under the award.

Which of the statements given above is/are correct?

- a. 1 only
- b. 2 only
- c. Both 1 and 2
- d. Neither 1 nor 2

4) Consider the following statements with respect to the Group Accidental Insurance Scheme (GAIS)-Pradhan Mantri Matsya Sampada Yojana (PMMSY)

1. The entire insurance premium amount is borne by the central and state Government, with no contribution from the beneficiary.

2. Under this scheme the men or women fishers in the age group of 18 to 70 years shall be eligible for insurance coverage.

Which of the statements given above is/are correct?

- a. 1 only
b. 2 only
c. Both 1 and 2
d. Neither 1 nor 2

5) Which of the following best defines the term 'Coronagraph'?

- a. An instrument designed to block the sun's bright rays and allow astronomers to view and study its nearby features or objects.
b. An instrument that allows scientists to take X-ray images of the universe to understand its structure and evolution.
c. An instrument that captures light and focuses it to see further into the distance.
d. An instrument to detect dust particles to measure properties such as mass, species, speed and direction of them.

Answers

1.c

Haemophilia

- Haemophilia is a rare, *inherited blood disorder* that affects the blood's ability to clot.
- Haemophilia can be classified as minor or severe depending on the percentage of clotting factor present in those afflicted.
- '**Haemophilia A**' is the more common version of the condition, is caused by the absence of a blood-clotting factor called Factor VIII.

Even though haemophilia is a rare disorder, India has the world's second largest patient pool, with an estimated 40,000 to 100,000 patients.

- **Symptoms** – It can be mild to severe, depending on the level of clotting.
- People with haemophilia may have:
 - Nosebleeds that take a long time to stop,
 - Bleeding from wounds that lasts a long time,
 - Bleeding gums,

- Skin that bruises easily and
- Pain and stiffness around joints, such as elbows, because of bleeding inside the body (internal bleeding).

- **Treatment** – It requires injections at frequent intervals, with infusions of a 'clotting factor' to prevent bleeding.
- **Gene therapy treatments**, promise to be a **one-time solution**.
- A gene introduced into the body teaches it to create enough of the clotting factor that can prevent such haemorrhage.
- **Challenges** – Current treatments require frequent Factor VIII replacement therapy, which faces challenges such as high costs, intravenous (IV) access in children, and low patient acceptance.
- **Roctavian** – Is the only one gene therapy which was approved by the U.S. Food and Drug Administration for commercial use in 2023.
- Roctavian works by *transporting the therapeutic gene into the body by using an adenovirus* as a carrier or vector and involves the liver in producing Factor VIII.
- **Gene therapy by Centre for Stem Cell Research (CSCR)** – The gene therapy approach developed by CSCR involves the use of a lentiviral vector to introduce a normal copy of the Factor VIII gene into **autologous haematopoietic stem cells (HSCs)**.

Autologous hematopoietic stem cells (HSCs) refers to a patient's own blood stem cells, which are harvested from their bone marrow or peripheral blood and then re-infused back into them after undergoing a high-dose chemotherapy treatment.

- In the CMC trial, stem cells from the patients were fused with the clotting factor gene using another kind of vector, called a **lentivirus**.
- **Lentiviral vectors** are a type of viral vector that can be used to transfer genetic material into cells for gene therapy.
- These modified HSCs generate blood cells capable of producing functional Factor VIII over extended periods, thus obviating the need for repeated infusions.
- **Centre for Stem Cell Research (CSCR)** – Is a unit of the Institute of Stem Cell Research and Regenerative Medicine (inStem), Bengaluru.
- It has been established as a collaboration between inStem, the Department of

Biotechnology, Ministry of Science and Technology, Government of India and the Christian Medical College, Vellore.

- CSCR is supported by the Department of Biotechnology of the Ministry of Science & Technology.
- Has a head appointed by the Director, Christian Medical College that is responsible for the overall management of the Centre.
- CSCR is advised by a Core Committee, which is appointed by the Principal, CMC of Vellore.

2.a

Prime Minister's WiFi Access Network Interface (PM-WANI)

- Prime Minister's WiFi Access Network Interface (PM-WANI) aims to *enhance the proliferation of public WiFi hotspots* to create robust digital communications infrastructure in the country, especially in rural areas.
- It was launched by the **Department of Telecommunication** in *December 2020*. (Statement 3 is incorrect)
- Through better access to public hotspots, the government aims to *increase employment for small and micro-entrepreneurs* and provide *low-cost internet to the underserved urban poor and rural households*.
- The scheme *encourages local shops and establishments to provide Wi-Fi for last-mile internet delivery* which does not require a licence or charge a registration fee.
- **Accessibility** – To access public hotspots under PM-WANI scheme one needs to download a relevant App which shows the available networks.
- The user can then choose from a list of available connections and make a payment to use the network.
- The user can access the network till his/her balance is exhausted.
- **PM-WANI ecosystem** – It consists of four parts, which are:

1. Public Data Office (PDO)
2. Public Data Office Aggregator (PDOA)
3. App Provider
4. Central Registry

- PDO establishes the Wi-Fi Hotspots and provides internet access to users.

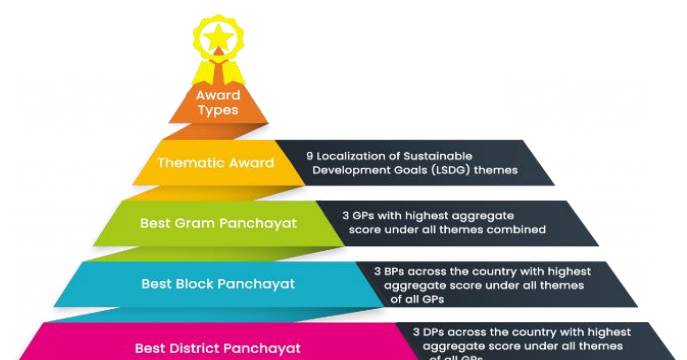
- **PDOA provides authorisation and accounting services to PDOs. (Statement 2 is incorrect)**

- The app provider displays the available hotspots in the phone's proximity.
- The central registry overseen by the Centre for Development of Telematics maintains details of App Providers, PDOs and PDOAs.
- According to the PM-WANI central registry, there are 136 PDO aggregators, 83 app providers, and 132,529 public Wi-Fi hotspots, as of November 2022.
- **Benefits** – WANI Wi-Fi architecture can lead to enhanced internet penetration which could lead to an increase in gross domestic product.
- It can scale up internet access in rural areas, thereby narrowing the digital divide.
- Can generate jobs in small- and medium-scale sectors.
- Could provide affordable internet access to the mass underserved section of society and help boost digital India.

3.c

National Panchayat Awards

- **Primary objectives** – To assess the performance of Panchayats in attainment of Sustainable Development Goals (SDGs).
- To *promote competitive spirit* among them and catalyse the process of LSDGs through Panchayati Raj Institutions for attaining LSDGs by 2030.
- National Panchayat Awards have been *revamped and launched during the year 2022* aligning them with 9 Localization of Sustainable Development Goals (LSDGs) themes aggregating 17 SDGs.
- **Features** – Awards competition structure is now *multi-level pyramidal* at Block, District, State/UT and National Level.



- All the Panchayats will be ranked based on their performance under each of the following 9 **LSGD themes**:

- Poverty free and enhanced livelihoods Panchayat
- Healthy Panchayat
- Child Friendly Panchayat
- Water Sufficient Panchayat
- Clean and Green Panchayat
- Self-sufficient infrastructure in Panchayat
- Socially Just and Socially secured Panchayat
- Panchayat with Good Governance
- Women-Friendly Panchayat

- All the Gram Panchayats have to mandatorily fill the Questionnaires under all 9 award themes.
- Categories of Awards** – Awards at National Level will be given to Gram, Block and District Panchayats under following categories namely:
- Deen Dayal Upadhyay Panchayat Satat Vikas Puraskar** – Top 3 GPs under each of 9 award themes.
- Nanaji Deshmukh Sarvottam Panchayat Satat Vikas Puraskar** – For top 3 best GPs, BPs and DPs with highest average score under all themes combined.
- Gram Urja Swaraj Vishesh Panchayat Puraskar** – For 3 GPs for their performance regarding adoption and usage of renewable sources of energy.
- Carbon Neutral Vishesh Panchayat Puraskar** – For 3 GPs towards achieving Net-Zero carbon emissions.
- Panchayat Kshamta Nirmaan Sarvottam Sansthan Puraskar** – For 3 Institutions who has provided institutional support to GPs in achieving LSDGs.
- Nanaji Deshmukh Sarvottam Panchayat Satat Vikas Puraskar** – One GP which qualifies and gets shortlisted for National Panchayat Awards during the subsequent years.
- Best Participant (State/District)** – State/UT with highest percentage of participation from GPs (>90%).

4.c

Group Accidental Insurance Scheme (GAIS)-Pradhan Mantri Matsya Sampada Yojana (PMMSY)

- Group Accidental Insurance Scheme (GAIS) provide insurance to people involved in fisheries activities.
- GAIS is implemented by the Department of Fisheries under the Pradhan Mantri Matsya Sampada Yojana (PMMSY).
- Fishers include fish workers, fish farmers and any other category of persons directly involved in fishing and fisheries related allied activities.
- Features** – The entire insurance premium amount is borne by the central and state Government, with *no contribution from the beneficiary*.
- Eligibility** – Under this scheme the *men or women fishers* in the *age group of 18 to 70 years* shall be eligible for insurance coverage as below:
 - Rs. 5.00 lakh against death or permanent total disability.
 - Rs. 2.50 lakh against permanent partial disability.
 - Rs. 25,000 against accidental hospitalization.

5.a

Coronagraph

Aditya L1 and Proba-3 are expected to conduct joint solar observations in 2025 using coronagraph.

- Coronagraph is being share in common for both the Aditya L1 and Proba-3 Mission.
- Coronagraph is an instrument designed to block the sun's bright rays and allow astronomers to view and study its periphery, nearby features or objects.*
- Aditya is the Visible Emission Line Coronagraph (VELC) and the Association of Spacecraft for Polari-metric and Imaging Investigation of the Corona of the Sun (ASPIICS) is on Proba-3.
- ASPIICS offers a field of view between the Sun's outer and inner corona, a circular belt that is normally observable during solar eclipse events.
- It has a 1.4-metre diameter occulting disk mounted on it. Effectively, this means that

ASPIICS will facilitate a close-up view of this belt from an earlier 3 solar radii to 1.08 solar radii.

13-12-2024

1) Consider the following statements with respect to the Investor Education and Protection Fund Authority (IEPFA)

1. It works under the aegis of the Ministry of Education.
2. It was established under the provisions of the Companies Act, 2013.

Which of the statements given above is/are correct?

- a. 1 only
- b. 2 only
- c. Both 1 and 2
- d. Neither 1 nor 2

2) SAMPARK, sometimes seen in the news recently, is associated with?

- a. Fund the Small and Medium Scale Food Processing Entrepreneurs.
- b. Empower naval veterans to access healthcare benefits.
- c. A voluntary scheme to approve service providers in the Travel Trade and Hospitality industry.
- d. A scheme to identify skill gaps and address them.

3) Consider the following statements with respect to the Athlete Biological Passport (ABP)

1. It is a tool to monitor athletes' biological markers over time to detect potential doping practices.
2. The Anti-Doping Administration and Management System (ADAMS) supports the implementation of the ABP.

Which of the statements given above is/are correct?

- a. 1 only
- b. 2 only
- c. Both 1 and 2
- d. Neither 1 nor 2

Answers

1. b

Investor Education and Protection Fund Authority (IEPFA)

An MOU was recently signed between the Investor Education and Protection Fund Authority (IEPFA) and the Association of Chartered Certified Accountants (ACCA).

- Investor Education and Protection Fund Authority (IEPFA) is entrusted with the responsibility of administration of the Investor Education Protection Fund (IEPF).
- It can make refunds of shares, unclaimed dividends, matured deposits or debentures and so on to investors and to promote awareness among investors about IEPF.
- It was established in 2016, under the provisions of section 125 of the **Companies Act, 2013**.
- **IEPFA works under the aegis of the Ministry of Corporate Affairs (MCA).**
- *Secretary to the Ministry of Corporate Affairs (MCA) is the Ex-officio-Chairperson of the IEPFA.*
- **IEPF is to be utilized for:**
 - The refund in respect of unclaimed dividends, matured deposits, matured debentures, the application money due for refund and interest.
 - Promotion of investors' education, awareness and protection.
 - Distribution of any disgorged amount among eligible and identifiable applicants for shares or debentures, shareholders, debenture-holders or depositors:
 - Who have suffered losses due to wrong actions by any person, in accordance with the orders made by the Court which had ordered disgorgement.
- Reimbursement of legal expenses incurred in pursuing class action suits by members, debenture-holders or depositors as may be sanctioned by the Tribunal.
- **Memorandum of Understanding** – Was signed between the Investor Education and Protection Fund Authority (IEPFA) and the Association of Chartered Certified Accountants (ACCA).
- **Objectives** – To incorporate financial education into schools to foster a financial

literacy culture that will help build a more robust economy and responsible investors.

- To create awareness on *investor education, and investor protection to students*.
- Equipping students with financial literacy to make wise choices and to create a generation that is prepared for the challenges that lie ahead and has financial stability.
- **Progress of the collaboration** – It is a four-year partnership, in which IEPFA will facilitate the introduction of *Financial Education for You (FEFY)* in select schools (on pilot basis), spanning both urban and rural regions.
- **Financial Education for You (FEFY)** – It is a four-year course by ACCA that targets schoolchildren in *grades from 6 to 9*.
- It aims to foster sound financial decision-making among young minds, thus laying a strong foundation for a future generation of informed investors.
- **Implementation** – Association of Chartered Certified Accountants (ACCA) will provide digital content free of cost and offer professional training to school educators.
- The program is designed to be **highly interactive**, to drive behavioral change in financial decision-making among students.
- **Association of Chartered Certified Accountants (ACCA)** – Founded in 1904 is a global professional accounting body that offers qualifications on accountancy and advancing standards in accountancy worldwide.

2.b

SAMPARK 4.0

SAMPARK 4.0 was recently conducted in Maharashtra that aids to ensure the well-being of naval veterans and their families, particularly those residing in remote and inaccessible regions.

- **Launched By** – Indian Navy under the ECHS (Ex-Servicemen Contributory Health Scheme).
- **Objectives** – It aims to foster a deeper sense of trust among veterans and their families.
- It *empower naval veterans to access healthcare benefits* efficiently and ensure no veteran is left without necessary care.
- **Launch Date** – December 16, 2024.
- **Locations** – A dedicated team of 1 officer and 5 sailors will visit ECHS Polyclinics in Thane,

Nasik (Deolali), Aurangabad, Ahmednagar, Solapur, Kolhapur and Pune.

- **Activities** – Conduct interactive sessions to educate veterans about healthcare services, entitlements, and procedures within ECHS, empowering them to access these benefits in a better manner.
- Facilitate direct communication with ECHS (Navy) officials.
- Address grievances related to accessing healthcare services.
- **About ECHS** – Ex-Servicemen Contributory Health Scheme (ECHS) was launched in 2003 to provide *allopathic and AYUSH* Medicare to Ex-servicemen pensioner and their dependents.
- It is provided through a network of ECHS Polyclinics, Service medical facilities, Government hospitals and private hospitals.
- The Scheme has been structured on the lines of *Central Government Health Scheme* to ensure cashless transactions, for the patients and is financed by the Government of India.
- There are **427 Polyclinics** (excluding 6 Polyclinics in Nepal) in 30 Regional Centers sanctioned by the Government.
- ECHS Polyclinics are designed to **provide 'Out Patient Care'** which includes consultation, essential investigation and provision of medicines.

3.c

Athlete Biological Passport (ABP)

The World Anti-Doping Agency has granted approval for the National Dope Testing Laboratory (NDTL), to be an Athlete Passport Management Unit (APMU) to manage the Athlete Biological Passport (ABP).

- India is part of a group of the 17 APMUs approved by WADA worldwide.
- This milestone marks a significant achievement for India in advancing its anti-doping initiatives.
- India's APMU would serve the country as well as the anti-doping organizations of neighboring countries.
- **Athlete Passport Management Unit (APMU)** – It is a specialized unit in the World Anti-Doping Agency (WADA), designed to manage and monitor athletes' biological passports.

- **Athlete Biological Passport (ABP)** – It is a sophisticated anti-doping tool used to monitor athletes' biological markers over time to detect potential doping practices.
- Instead of identifying specific prohibited substances, the ABP focuses on finding the *physiological effects of doping such as insomnia, anxiety and weight Loss*.
- **Key Features of ABP:**
- **Biological Profiling** – Monitors blood and steroidal variables for suspicious patterns in athletes over time to find doping.
- Haematological Module detects blood doping by monitoring red blood cell parameters.
- Steroidal Module tracks fluctuations in steroid profiles through urine samples.
- **Targeted Testing** – Data from ABP guides the anti-doping agencies to conduct precise and efficient testing.
- **Management Framework** – It is governed by the World Anti-Doping Agency (WADA) with comprehensive guidelines.
- It is integrated into WADA's Anti-Doping Administration and Management System (ADAMS) for seamless monitoring and data sharing.
- **Global Implementation** – ABP is now an integral part of anti-doping programs worldwide, enhancing fairness and protecting clean athletes by discouraging doping practices through advanced scientific methods.

14-12-2024

1) Consider the following statements with respect to the National Conference of Chief Secretaries

1. It emphasises on the “evolution and implementation” of a common development agenda and blueprint for cohesive action in partnership with the States.
2. It is chaired by the Cabinet Secretary of India.
3. It is organised by the Ministry of Parliamentary Affairs.

How many of the statements given above are correct?

- a. Only one
- b. Only two
- c. All three
- d. None of the above

2) SAMARTH Udyog Bharat, sometimes seen in the news recently, is associated with?

- a. Enhancement of Competitiveness in the Indian Capital Goods Sector.
- b. AI-Enabled Dashboard Cameras for Efficient Emergency Response.
- c. Training programs to train Rural Poor including Below Poverty Line (BPL) youth.
- d. Cooperative Enterprise Support and Innovation Scheme.

3) Consider the following statements with respect to Titanium

1. Titanium Sponge is used in preparing critical components in the aerospace industry like Aircraft fuselage, engine parts and loading gear.
2. India has rich reserves of titanium ore in the beach sands along the coasts of Kerala, Tamil Nadu, Andhra Pradesh and Odisha.
3. Titanium Slag is an intermediate product in the value chain of Titanium and can be used as a feed material to produce Titanium Sponge.

How many of the statements given above are correct?

- a. Only one
- b. Only two
- c. All three
- d. None of the above

4) Consider the following statements with respect to PM Formalisation of Micro Food Processing Enterprises (PMFME) Scheme

1. It aims to enhance the competitiveness of existing individual micro-enterprises in the unorganized segment of the food processing industry.
2. It is a central sector scheme that will directly assists the micro food processing units by credit linked subsidy.
3. The Seed Capital is a component under the scheme being implemented through respective State Rural Livelihood Missions & State Urban Livelihood Missions.

How many of the statements given above are correct?

- a. Only one

- b. Only two
- c. All three
- d. None of the above

5) AgeXtend, sometimes seen in the news recently, is associated with?

- a. AI-based platform to identify age-defying molecules rapidly.
- b. A scheme to resolve the grievances faced by the senior citizens.
- c. An agency that conduct research for their anti-aging properties.
- d. A scheme to create a universal social security system for all senior citizens.

Answers

1.a

National Conference of Chief Secretaries

The 4th National Conference of Chief Secretaries in Delhi is all set to be held from 14th and 15th December 2024.

- National Conference of Chief Secretaries emphasises on the “evolution and implementation” of a common development agenda and blueprint for cohesive action in partnership with the States.
- It is driven by the vision to strengthen cooperative federalism and ensure better coordination between the Centre and States to achieve faster growth and development.
- **It is chaired by the Prime Minister Shri Narendra Modi. (Statement 2 is incorrect)**
- 4th National Conference of Chief Secretaries is a 3 day Conference that will emphasise on the evolution and implementation of a common development agenda.
- **It is organised by the NITI Aayog. (Statement 3 is incorrect)**
- The Conference has been held annually for the last 3 years.
- First Chief Secretaries Conference was held in June 2022 at Dharamshala, followed by second and third conference at New Delhi in January 2023 and December 2023 respectively.

2.a

SAMARTH Udyog Bharat 4.0

- SAMARTH Udyog Bharat 4.0 is an Industry 4.0 initiative of *Ministry of Heavy Industry & Public Enterprises*.
- The scheme aids to enhance the competitiveness in Indian Capital Goods Sector.
- SAMARTH Udyog encompasses manufacturers, vendors and customers as the main stakeholders.
- The experiential and demonstration centres for Industry 4.0 have been proposed to spread awareness about I4.0 amongst the Indian manufacturing industries.
- **Five centres** of I4.0 having a unique identity for spreading awareness and branding have been sanctioned under SAMARTH Udyog.
- Five CEFC (Common Engineering Facility Center) Projects are:
 1. Center for Industry 4.0 (C4i4) Lab Pune.
 2. IITD-AIA Foundation for Smart Manufacturing.
 3. I4.0 India at IISc Factory R & D Platform.
 4. Smart Manufacturing Demo & Development Cell at CMTI.
 5. Industry 4.0 projects at DHI CoE in Advanced Manufacturing Technology, IIT Kharagpur.
- SAMARTH Centres have been providing assistance to industries including MSMEs to train the workforce and make them aware about Industry 4.0 technologies.
- **No financial assistance** is given to any industry including MSME for adopting Industry 4.0 enabled technologies under SAMARTH centre initiative of the Scheme.

3.c

Titanium

The Joint Venture between IREL (India) Limited (IREL) and Ust-Kamenogorsk Titanium & Magnesium Plant JSC, recently proposes to convert low TiO₂ ilmenite to high Titanium oxide (TiO₂) Titanium slag.

- Titanium (Ti) is a silvery gray metal of Group 4 (IVb) of the periodic table.

- Titanium is a lightweight, high-strength, low-corrosion structural metal and is used in alloy form for parts in high-speed aircraft.
- Titanium is widely distributed and *constitutes 0.44% of Earth's crust.*
- The metal is found combined in practically all rocks, sand, clay and other soils.
- India has rich reserves of titanium ore in the beach sands along the ***coasts of Kerala, Tamilnadu, Andhra Pradesh and Odisha.***
- Kerala Minerals and Metals Limited (KMML), Kollam, produces titanium tetrachloride (TiCl₄) as an intermediate product during the production of pigment grade titanium dioxide.
- Based on the Defence Metallurgical Research Laboratory (DMRL) technology, the country's first commercial titanium sponge plant with a capacity of 500 tons per year was established at KMML, with funding from ISRO.
- **Titanium slag** – Is an intermediate product in the Titanium value chain.
- Titanium Slag can be used as the *feed material to produce Titanium Sponge.*
- **Titanium Sponge** – It is used in preparing critical components in the aerospace industry like Aircraft fuselage, engine parts and loading gear.
- In defence, it is used in armour plating, hull and heat exchanger in submarine, missiles and fighter jets and so on.
- In atomic energy it is used for nuclear reactor shields, heat exchanger and condenser tubes and so on.
- At present, in the country the titanium sponge capacity is extremely limited (500 Tonnes per annum) with production of the order of about 260 Tonnes per annum.
- The setting up of this JV plant is expected to catalyse the establishment of Ti Slag/sponge manufacturing industry, which has been hindered by non-availability of high TiO₂ feed stock.
- The quality of Ti slag produced in Indian facility will be at par with the one required for producing Ti sponge/metal essential for strategic application in aerospace, defence and atomic energy.

PM Formalisation of Micro Food Processing Enterprises (PMFME) Scheme

- PM Formalisation of Micro Food Processing Enterprises (PMFME) Scheme was launched in partnership with the State/ UT Governments under Aatmanirbhar Bharat Abhiyan.
- It aims to *enhance the competitiveness of existing individual micro-enterprises in the unorganized segment* of the food processing industry.
- It is a **centrally sponsored scheme** that is designed to address the challenges faced by the micro-enterprises and to tap the potential of groups and cooperatives in supporting the upgradation and formalization of these enterprises.
- It also aims to promote formalization of the sector and support Farmer Producer Organizations (FPOs), Self Help Groups (SHGs) and Producers Cooperatives along their entire value chain.
- *Under the scheme, 2, 00,000 micro food processing units will be directly assisted with credit linked subsidy.*
- Adequate supportive common infrastructure and institutional architecture will be supported to accelerate the growth of the sector.

The unorganized food processing sector in the country comprises nearly 25 lakh food processing enterprises that are unregistered and informal.

- Under the PMFME Scheme, Ministry provides grants for **Seed Capital up-to Rs. 40,000/per member of SHG.**
- Individual SHG member can avail credit linked grant @35% of the project cost with maximum ceiling of Rs.10 lakh as a single unit of food processing enterprise.
- SHGs are also eligible for assistance under relevant component schemes of Central Sector Pradhan Mantri Kisan SAMPADA Yojana (PMKSY).
- *The Seed Capital component of PMFME Scheme is implemented through respective State Rural Livelihood Missions (SRLMs) & State Urban Livelihood Missions (SULMs).*

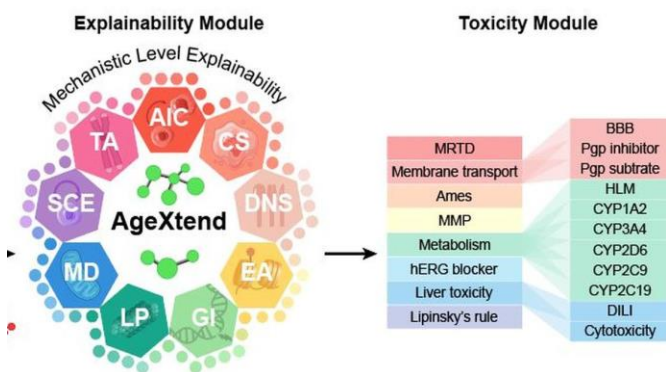
5.a

AgeXtend

- AgeXtend is an AI-based platform to identify age-defying molecules rapidly.

4.c

- It also helps in understanding the biological mechanism of compounds, says one of the scientists.
- It was **developed by the Researchers at IIT-Delhi**.
- The tool can efficiently cut down the time taken to identify viable molecules with geroprotectors or age defying properties, through conventional research.
- The platform had uncovered several promising candidates validated through experiments on yeast, worms (*C. elegans*) and human cell models.
- A fraction of them, less than 1%, have been identified with anti-ageing properties.
- It uses AI to predict and identify compounds with anti-ageing properties, assess their safety, and understand their biological effects.



16-12-2024

1) Consider the following statements with respect to the Monetary Policy Committee (MPC)

1. It consists of 6 members with three Members from RBI and three are appointed by the Central Government.
2. The Governor of the Reserve Bank of India is the ex-officio chairperson of the MPC.
3. The tenure of the Members of the Monetary Policy Committee appointed by the Central Government is four years.

How many of the statements given above are correct?

- a. Only one
- b. Only two
- c. All three
- d. None of the above

2) Jumped Deposit, sometimes seen in the news recently, is associated with?

- a. A new scam that targets mobile money-users.
- b. A fixed deposit scheme offered by a company or financial institution.
- c. A scam asking the people to pay an upfront fee for a service.
- d. An account where you deposit a fixed amount of money every month until the account reaches maturity.

3) Consider the following statements with respect to High Courts Judges

1. Article 217 deals with transfer of a judge from one High Court to another.
2. The tenure of the High court judges is until the age of 62.
3. The Features of the removal of high court judges in the Indian Constitution was borrowed from the British Constitution.

How many of the statements given above are correct?

- a. Only one
- b. Only two
- c. All three
- d. None of the above

4) Consider the following statements with respect to Indian star tortoise

1. Indian star tortoises are primarily herbivorous and are popular as exotic house pets.
2. It is listed in in Schedule I of the Wildlife (Protection) Act 1972.

Which of the statements given above is/are correct?

- a. 1 only
- b. 2 only
- c. Both 1 and 2
- d. Neither 1 nor 2

5) Consider the following statements with respect to the Spices Board of India

1. It was constituted on 1987, under the Spices Board Act 1986 with the merger of the erstwhile Cardamom Board and Spices Export Promotion Council.
2. It is an autonomous body responsible for the export promotion of the 52 scheduled spices and development of Cardamom.
3. It works under the aegis of the Ministry of Agriculture & Farmers' Welfare.

Select the correct answer using the codes given below:

- a. 1 and 2 only
- b. 2 and 3 only
- c. 1 and 3 only
- d. 1, 2 and 3

Answers

1.c

Monetary Policy Committee (MPC)

- Monetary Policy Committee (MPC) is responsible for fixing the benchmark interest rate in India.
- The first such MPC was constituted on September 29, 2016.
- **Composition** – It consists of **6 members** with **three Members from RBI** and three are appointed by the Central Government.
- **Governor of the Reserve Bank of India is the ex officio Chairperson.**
- Deputy Governor of the Reserve Bank of India, in charge of Monetary Policy – Member, ex officio.
- One officer of the Reserve Bank of India to be nominated by the Central Board – Member, ex officio.
- Prof. Ram Singh, Director, Delhi School of Economics, University of Delhi – Member
- Shri Saugata Bhattacharya, Economist – Member
- Dr. Nagesh Kumar, Director and Chief Executive, Institute for Studies in Industrial Development, New Delhi – Member.
- **Functions** – The MPC determines the policy repo rate required to achieve the inflation target.

- Once in every six months, the Reserve Bank publishes the Monetary Policy Report.
- The MPC is required to meet at least four times in a year.
- The quorum for the meeting of the MPC is four members.
- Each member of the MPC has one vote, and in the event of an equality of votes, the Governor has a second or casting vote.
- Each Member of the Monetary Policy Committee writes a statement specifying the reasons for voting in favour of, or against the proposed resolution.

2.a

Jumped Deposit

Cyber Crime Wing of Tamil Nadu police has recently warned the people about the new UPI scam Known as the 'Jumped Deposit' recently.

- Jumped Deposit is a new scam that targets mobile money-users (those making payments through mobile phones).
- This fraudulent method exploits users' trust to execute unauthorised withdrawals through Unified Payments Interface (UPI).

To know more about it [click here](#)

3.a

Constitutional Provisions for High Court Judges

- **Article 217** – Appointment and conditions of the office of a Judge of a High Court.
- **Article 219** – Oath or affirmation by judges of High Courts.
- **Article 220** – Restriction on practice after being a permanent judge.
- **Article 222** – Transfer of a judge from one High Court to another. (**Statement 2 is incorrect**)
- **Article 224** – Appointment of additional and acting judges.
- **Article 224A** – Appointment of retired judges at sittings of High Courts.
- **54th Amendment Act, 1986**, Increased the salaries of the Supreme Court and high court judges and enabled the Parliament to change them in future by an ordinary law.

- **The Indian constitutional features about the removal of Supreme Court and high court judges was borrowed from the US Constitution. (Statement 3 is incorrect)**
- To know more about the *Impeachment of High Court Judge* [Click here](#)

4.c

Indian Star Tortoise (*Geochelone elegans*)

- Indian Star Tortoise has a star-shaped pattern on its shell, a rounded shell, and a tan head, limbs and tail.
- The shell's upper part is called the **carapace** and the bony plates that make up the shell are called scutes.
- Indian star tortoises are *protected by their heavy shells* and habit of staying under cover when not actively foraging or breeding.
- They are popular as exotic house pets and **it's illegal to own one in India** but also unethical since they are vulnerable in the wild.
- These tortoises are very rare to encounter, so I chose the rainy season because that's the breeding season.
- **Habitat** – It inhabits dry areas and scrub forest.
- **Distribution** – It is *endemic to the subcontinent*, Indian star tortoises reside in arid pockets of northwest India (bordering Pakistan), South India, and Sri Lanka.
- However, members of the species have also been found in people's homes as far afield as Canada and the U.S.
- **Diet** – These tortoises are hardy herbivores, feed mostly on mixed grasses as well as weeds, flowers, leaves of succulent plants.
- **Conservation status:**
 - **IUCN** – Vulnerable
 - **Convention on International Trade in Endangered Species of Wild Fauna and Flora (CITES)** – Appendix I
 - **Wildlife (Protection) Act 1972** – Schedule I.

5. a

Spices Board of India

Recently the Spices Board of India has warned people against participating in the unauthorised cardamom auctions in neighbouring Tamil Nadu.

- The Spices Board of India on 26th February 1987 under the Spices Board Act 1986 with the merger of the erstwhile Cardamom Board (1968) and Spices Export Promotion Council (1960).
- Spices Board is *one of the five Commodity Boards functioning under the Ministry of Commerce & Industry. (Statement 3 is incorrect)*
- It is an **autonomous body** responsible for the export promotion of the 52 scheduled spices and development of Cardamom (Small & Large).

Large Cardamom is one of the most important cash crops of Sikkim state and Darjeeling District of West Bengal.

- **Main Functions** – Research, Development and Regulation of domestic marketing of Small & Large Cardamom.
- Post-harvest improvement of all spices.
- Promotion of organic production, processing and certification of spices.
- Development of spices in the North East.
- Provision of quality evaluation services.
- Export promotion of all spices through support for:
 - Technology upgradation
 - Quality upgradation
 - Brand promotion
 - Research & product development
- **Indian Cardamom Research Institute (ICRI)** – Was established in 1978 as the research wing of Spices Board, with its headquarters at Myladumpara, Idukki District (Kerala).
- It undertakes the basic and applied research on small Cardamom.

17-12-2024

1) Consider the following statements with respect to Telecom Technology Development Fund (TTDF)

1. It has been setup under Universal Services Obligation Fund (USOF) of Department of Telecom (DOT).

2. Only companies or start-ups headquartered in India and Indian R&D or academic institutions are eligible to receive funding from TTDF.

- c. Both 1 and 2
d. Neither 1 nor 2

Which of the statements given above is/are **incorrect**?

- a. 1 only
b. 2 only
c. Both 1 and 2
d. Neither 1 nor 2

2) Consider the following statements with respect to Jalvahak Scheme

1. It aims to incentivize cargo movement via inland waterways.
2. Inland & Coastal Shipping Ltd. (ICSL) is one of the implementing agency of it.

Which of the statements given above is/are correct?

- a. 1 only
b. 2 only
c. Both 1 and 2
d. Neither 1 nor 2

3) Green Glass Ceiling, sometimes seen in the news recently, is associated with?

- a. A hidden barrier where women are disproportionately left behind from green jobs in various sectors.
b. A transparent, recyclable and energy-efficient building glass material.
c. A ceiling on the investment in the green projects.
d. People of colour support environmental protection at a higher rate than whites.

4) Consider the following statements with respect to the European Free Trade Association (EFTA)

1. It is the intergovernmental organisation founded by the Stockholm Convention in 1960.
2. India is one of the members of the EFTA.

Which of the statements given above is/are correct?

- a. 1 only
b. 2 only

5) India's First Diabetes Biobank was set up by which of the following?

- a. India Institute of Medical Sciences and Punjab Institute of Medical Sciences.
b. Indian Council of Medical Research and Madras Diabetes Research Foundation.
c. All India Institute of Hygiene and Public Health and Jawaharlal Institute of Postgraduate Medical Education.
d. The Rajendra Memorial Research Institute of Medical Sciences and World Medical Association.

Answers

1. d

Telecom Technology Development Fund (TTDF)

Centre for Development of Telematics (C-DOT) and Trois Infotech have recently signed an agreement to Develop "Face Recognition Using Drone" Under TTDF Scheme.

- TTDF aims to support and encourage Research and Development in Telecom products and technologies to achieve Aatmanirbhar Bharat, aligning with the Hon'ble PM's call for 'Jai Anushandhan'.
- This initiative also aims to unite telecom service providers, sensor manufacturers, CCTV suppliers, and IoT providers on a single platform to explore and exploit the potential advantages of 5G.
- It has been set up under the Universal Services Obligation Fund (USOF) of Department of Telecom (DOT).
- The initiative seeks to develop '5G Intelligent Villages' by leveraging the transformative power of 5G technology to uplift rural communities.
- *Only companies/start-ups headquartered in India (not subsidiaries of foreign companies) and Indian R&D/academic institutions are eligible to receive funding from TTDF.*
- **Centre for Development of Telematics (C-DOT)** – Is the premier telecom R&D centre under the Department of Telecommunications (DoT).
- **C-DOT's Collaborative Programs (CCP)** – The scheme is designed to fund Indian start-

ups, academia, and R&D institutions, acting as a crucial enabler for the design, development and commercialization of telecommunication products and solutions.

- It aims to facilitate affordable broadband and mobile services, playing a vital role in bridging the digital divide across India.

2. c

Jalvahak Scheme

The Union government has recently launched the Jalvahak scheme to incentivize cargo movement via inland waterways.

- Jalvahak Scheme aims to incentivize cargo movement via inland waterways.
- It unlocks the trade potential of inland waterways while reducing logistics costs and decongesting road and rail networks.
- It would optimise supply chains for major shipping companies, freight forwarders, and trade bodies.
- **Implementing agency** – Inland Waterways Authority of India (IWAI) and Inland & Coastal Shipping Ltd. (ICSL).
- **Budget** – Investment of Rs 95.4 crores for 3 years.
- **Coverage** – **National Waterways (NW)**, such as:
 - NW1 – River Ganga
 - NW2 – River Brahmaputra
 - NW16 – River Barak
- **Target** – 200 million metric tons (MT) cargo movement by 2030 and 500 MT by 2047.
- **Incentives** – Up to 35% reimbursement on operating costs for Cargo owners transporting goods over 300 km via waterways.
- To know more about **Jalvahak Scheme** [click here](#)

3. a

Green Glass Ceiling

The recent analysis of International Monetary Fund has revealed that Women are being left out of jobs in sustainable sectors despite growing employment opportunities in these green sectors.

- Green glass ceiling is a **hidden barrier** where women are disproportionately left behind from green jobs in sectors.

- The sectors include renewable energy, sustainable agriculture and waste management.
- To know more about Green Glass Ceiling, [click here](#)

4. a

European Free Trade Association (EFTA)

- The European Free Trade Association (EFTA) is the intergovernmental organisation.
- **Aim** – Promotion of free trade and economic integration between the members.
- Members – Iceland, Liechtenstein, Norway and Switzerland. (**India is not a member**)
- It was **set up in 1960** by its then seven Member States for the promotion of free trade and economic integration between its members.
- **Committees** – EFTA has **3 committees** with an advisory role whose mandate is to provide advice to its member states on all issues of relevance to the organisation.
 1. The EFTA Parliamentary Committee
 2. The EFTA Consultative Committee
 3. The EEA EFTA Forum
- **Functions** – Maintaining and developing the EFTA Convention, which regulates economic relations between the four EFTA States.
- Managing the Agreement on the European Economic Area (EEA Agreement), which brings together the Member States of the European Union and three of the EFTA States such as Iceland, Liechtenstein and Norway in a single market, also referred to as the Internal Market.
- Developing EFTA's worldwide network of free trade agreements.
- The four EFTA States are all open, competitive economies committed to the progressive liberalisation of trade in the multinational arena and in free trade agreements.
- To know about *India-EFTA Trade and Economic Partnership Agreement* [Click here](#)

5.b

Diabetes Biobank

- Biobank is a secure place for storing human samples.

- They are critical in biomedical research, collecting, processing, storing and distributing bio-specimens to support scientific research.
- **Diabetes Biobank** – It is a repository of population-based biological samples.
- It aims to gather, process, store and distribute bio-specimens to assist scientific studies with the permission of the ICMR.
- It could help in the identification of novel biomarkers for early diagnosis and the development of personalised treatment strategies.
- It will facilitate advanced research on the causes of diabetes, the variations of the Indian type of diabetes and related disorders.
- India's First Diabetes Biobank was set up in joint collaboration of:
 - Indian Council of Medical Research (ICMR)
 - Madras Diabetes Research Foundation (MDRF)
- It is set up at Madras Diabetes Research Foundation (MDRF), **Chennai**.
- To know more about *India's First Diabetes Biobank and Diabetes* [Click here](#)

18-12-2024

1) Consider the following statements with respect to the Bhartiya Beej Sahkari Samiti Limited (BBSSL)

1. BBSSL will undertake production, procurement & distribution of quality seeds.
2. It will help in increasing the seed replacement rate and varietal replacement rate by ensuring the role of farmers in production of certified seeds.
3. It is an initiative of the Ministry of Agriculture & Farmers' Welfare.

How many of the statements given above are correct?

- a. Only one
- b. Only two
- c. All three
- d. None of the above

2) CHARAK, sometimes seen in the news recently, is associated with?

- a. An innovative health-centric Corporate Social Responsibility (CSR) initiative.
- b. A platform to reduce Illegal Trading of Flora and Fauna.
- c. A platform to reduce Illegal Trading of Flora and Fauna.
- d. A transient astronomical event that causes the sudden appears brightly.

3) Consider the following statements:

1. Natural recharge area is an area from which the water seeps into the ground and emerges elsewhere through springs.
2. Reduction in the long-term rainfall in the region can contribute to the drying up of the springs in Himalayas.
3. Springs in Himalayas region contributes about 64% of the cultivable land for irrigation.

How many of the statements given above are correct?

- a. Only one
- b. Only two
- c. All three
- d. None of the above

4) Consider the following statements with respect to Santa Ana Winds

1. They are local winds of India that causes heat waves and heat strokes.
2. They increase the wildfire risk because of the dryness of the winds.

Which of the statements given above is/are correct?

- a. 1 only
- b. 2 only
- c. Both 1 and 2
- d. Neither 1 nor 2

5) The Report "Waste to Worth: Managing India's Urban Water Crisis through Wastewater Reuse" is released jointly by?

- a. Centre for Science and Environment (CSE) and the National Mission for Clean Ganga (NMCG).

- b. Environmentalist Foundation of India and National Institute of Hydrology.
- c. World Water Council and UN-Water.
- d. Central Water Commission and Central Ground Water Board (CGWB).

Answers

1. b

Bhartiya Beej Sahkari Samiti Limited (BSSSL)

- BSSSL will undertake production, procurement & distribution of quality seeds.
- The distribution of seeds takes place under single brand through network of cooperatives to improve crop yield and develop a system for preservation and promotion of indigenous natural seeds.
- BSSSL was set up under the Multi-State Cooperative Societies (MSCS) Act, 2002 by the **Ministry of Cooperation. (Statement 3 is incorrect)**
- BSSSL will help in increasing the seed replacement rate and varietal replacement rate by ensuring the role of farmers in production of certified seeds.
- BSSSL will help in increasing the production of quality seeds in India through cooperatives.
- BSSSL is promoted by the following:
 - Indian Farmers Fertilizer Cooperative Limited (IFFCO),
 - Krishak Bharati Cooperative Limited (KRIBHCO),
 - National Agricultural Cooperative Marketing Federation of India Ltd. (NAFED),
 - National Dairy Development Board (NDDB) and
 - National Cooperative Development Corporation (NCDC).
- BSSSL has a full-time resource based in Patna and Bhagalpur.
- **The cooperatives of all levels from primary to apex can become members of BSSSL.**

2. a

CHARAK

Recently, the Singrauli-based Coal India arm Northern Coalfields Limited (NCL) in Madhya Pradesh, has rolled out the 'CHARAK' scheme.

- **CHARAK** – It is an innovative health-centric Corporate Social Responsibility (CSR) initiative.

Corporate social responsibility (CSR) is a self-regulating business model that helps a corporate company be socially accountable to itself, its stakeholders, and the public.

- **Objectives** – To provide free treatment for patients suffering from identified Life-Threatening diseases belonging to economically weaker section of people in the Singrauli region.
- To ensure access to quality healthcare while easing the financial and emotional burden on affected families.
- **Free treatment** – At NCL's dedicated hospital (NSC) or at specialised empanelled hospitals across the country.
- **Eligibility** – Residents of Singrauli and Sonbhadra districts having annual family income below Rs. 8 Lakhs from all sources will be eligible for benefit under this scheme.
- **Diseases covered** – It includes Tuberculosis (TB), HIV, Cardiovascular diseases, Organ Transplant, Multisystem disorders, Connective Tissue disorders and sudden vision loss etc.

3. c

Springs in Himalayas

- Springs occurs when water pressure causes a natural flow of groundwater onto the earth's surface.
- Springs get water from aquifers deep in the ground.
- The Hot springs of the Himalaya are located in the zones of deep faults that define tectonic boundaries.
- **In Himalayan region, springs serves 64% of the cultivable land for irrigation.**

Around three million springs flow across the Indian Himalayan region.

- **Natural recharge area** – Area from which the water seeps into the ground and emerges elsewhere through springs.
- Natural springs acts as a source of water for both drinking and irrigation.

- **Cause of decline of Spring:**
 - Rising temperatures
 - Altered precipitation patterns
 - Decreasing snowfall and rainfall
 - Change in land cover and land use
 - Reduction in the long-term rainfall in the region
 - Landslides
 - Rain-related drought
- **Impacts of declination** – Several such areas in Jammu and Kashmir, Ladakh, Himachal Pradesh, Uttarakhand and northeastern states have been affected by the causes that lead to drying up of springs.
- The rural communities will face shortages in drinking water, agriculture, and daily household needs.
- To know more about the springs in Himalayas [click here](#)

4. b

Santa Ana Winds

- Santa Ana Winds occur when air from a region of high pressure over the dry, desert region of the south-western **U.S.** flows westward towards low pressure located off the California coast.
- This *creates dry winds* that flow east to west through the mountain passages in Southern California.
- These winds are most common during the cooler months of the year, occurring from September through May.
- Santa Ana winds typically feel warm (or even hot) because as the cool desert air moves down the side of the mountain, it is compressed, which causes the temperature of the air to rise.
- These strong winds can cause major property damage.
- They also *increase wildfire risk because of the dryness of the winds* and the speed at which they can spread a flame across the landscape.

5.a

“Waste to Worth: Managing India’s Urban Water Crisis through Wastewater Reuse” Report

- The report Waste to Worth: Managing India’s Urban Water Crisis through Wastewater Reuse, released jointly by the Centre for Science and Environment (CSE) and the National Mission for Clean Ganga (NMCG).
- The report, unveiled at a national workshop co-organised by CSE and NMCG under the Union Ministry of Jal Shakti (water resources).
- The report highlights the potential of wastewater reuse to mitigate water scarcity caused by rapid urbanisation, industrial expansion and climate change.

India currently treats only 28% of the 72,000 million litres of wastewater generated daily.

- Regional disparities in wastewater treatment and reuse make the process challenging.
- Uttar Pradesh leads in untreated wastewater volumes, followed by Maharashtra, Karnataka, Rajasthan, Tamil Nadu, Delhi and Haryana.
- The report underscored the need to view treated wastewater not as a waste product but as a valuable resource critical to India’s water security.

19-12-2024

1) Which of the following statements regarding National Consumer Helpline is/are correct?

1. Consumers can register their grievances in 22 languages.
2. The grievances are registered on the Integrated Grievance Redressal Mechanism (INGRAM), an omni-channel IT-enabled central portal.

Select the answer using the code given below:

- a. 1 only
- b. 2 only
- c. Both 1 and 2
- d. Neither 1 nor 2

2) ‘Donetsk’, sometimes seen in the news recently, is located in?

- a. Israel
- b. Iran
- c. Syria
- d. Ukraine

3) Consider the following statements with respect to Unified Logistics Interface Platform

1. It is a digital gateway that allows industry players to access logistics-related datasets from various government systems.
2. It works under the Union Ministry of Road Transport and Highways
3. It is a part of the National Logistics Policy.
4. It is in line with the vision of 'PM Gati shakti'.

How many of the above statements is/are correct?

- a. Only one
- b. Only two
- c. Only Three
- d. All four

4) Which of the following statements regarding Minimum Support Prices is/are correct?

1. Indian government fixes MSP for 22 crops, including paddy, wheat, several pulses, oilseeds and millets.
2. It is not legally binding on the government.

Select the answer using the code given below:

- a. 1 only
- b. 2 only
- c. Both 1 and 2
- d. Neither 1 nor 2

5) Consider the following factors:

1. Demand and supply of a commodity
2. Cost of production
3. Market price trends (both domestic and international)
4. Inter-crop price parity
5. Likely implications of an MSP on consumers

Which of the above factor(s) is/are considered before fixing the Minimum Support Price?

- a. All except 5
- b. All except 2 and 4
- c. All except 1 and 2

d. All of the above

Answers

1. b

National Consumer Helpline (NCH)

- National Consumer Helpline (NCH) is a *single access point for grievance redressal of consumers* that is **available in 17 languages**.
- It can be registered through a toll-free number (1915), sms (8800001915), web portal, NCH App, UMANG App
- The grievances are **registered on the Integrated Grievance Redressal Mechanism (INGRAM)**, an omnichannel IT-enabled central portal or through various channels.
- Each and every grievance received through the portal will be taken up with the concerned company / agency etc. for speedy disposal.
- It may take *up to a maximum of 45 days* to arrive at a logical conclusion.

It is a **Pre-Litigation stage step**.

To know more, [click here](#)

2.d

Donetsk

- A Ukrainian drone recently attacked and destroyed a Russian ammunition depot near the village of Markine in Russian-occupied Donetsk region.

Donetsk is a city in the south-eastern of Ukraine, on the headwaters of the Kalmius River.

3. c

Unified Logistics Interface Platform (ULIP)

- **ULIP** – It is a **digital gateway** that allows industry players to **access logistics-related datasets** from various government systems through API-based integration.
- **Launched in – 2022, under Ministry of Commerce and Industry.**
- **Objectives** – To create a nationwide single window logistics platform for end-to-end visibility.
- The 3 key components are:

1. Integration with existing data sources of ministries
 2. Data exchange with private players
 3. Unified document reference in the supply chain
- **Significance** – It is a *part of the 'National Logistics Policy (NLP)'* and it is in line with the *vision of 'PM Gati shakti'*.
 - It is a significant step towards enhancing transparency, operational efficiency, and innovation in India's logistics sector.

To know more, click [here](#)

4.c

Minimum Support Price

- **Need** - Farmers for most part operate in buyer's market and mostly crops are harvested and marketed in bulk, so sudden increase relative to demand may lead to fall in prices and lesser income.
- **MSP** – It is the price at which the government is obligated to purchase the produce from farmers in the event that the market price falls below this threshold.
- It is **not legally binding**.
- **Coverage** – **22 crops** (Kharif, Rabi and commercial crops)
- It includes cereals (7), pulses (5), oilseeds (7), raw cotton, raw jute and copra.
- **Announcement** – At the *beginning of the sowing season*.

Price value – On the basis of the *recommendations of the Commission for Agricultural Costs and Prices (CACP)* and to be *approved by Cabinet Committee on Economic Affairs (CCEA)*.

5. d

Minimum Support Price

- **The Factors considered before fixing the [Minimum Support price](#)** are:
 - Demand and supply of a commodity.
 - Cost of production.
 - Market price trends (both domestic and international).
 - Inter-crop price parity.

- Terms of trade between agriculture and non-agriculture (ratio of prices of farm inputs and farm outputs).
- A minimum of 50% as the margin over the cost of production.
- Likely implications of an MSP on consumers.

- **Cost provided** – The *MS Swaminathan Commission* had recommended $C2+50\%$ but the government is providing $A2+FL+50\%$.

- The Calculation of Cost of Production:

- **A2** – Actual cost of farming including seeds, fertilisers and hired labour.
- **A2+FL** – Includes value of unpaid labour of family workers in addition to A2
- **C2** – Includes the cost of land rentals or interest on invested capital in addition to A2+FL

20-12-2024

1) Consider the following statements with respect to National Commission for Minority Educational Institutions (NCMEI)

1. It is a Statutory Authority that was set up to safeguard the educational rights of the minorities enshrined in Article 30(1) of the Constitution.
2. It is a quasi-judicial body and has been endowed with the powers of a Civil Court.
3. The term 'minority' is defined in the constitution of India.

How many of the statements given above are correct?

- a. Only one
- b. Only two
- c. All three
- d. None of the above

2) Moldova, a landlocked country, sometimes seen in the news, is situated at which of the following continent?

- a. Europe
- b. Asia
- c. South America
- d. Africa

3) Climate Country and Development Reports (CCDR), sometimes seen in the news recently, is an initiative of?

- World Bank
- World Economic Forum
- United Nations Development Programme
- Organisation for Economic Co-operation and Development

4) Consider the following statements with respect to Namo Didi Drone Scheme

- It is a centrally Sponsored Scheme.
- It is a part of Deendayal Antyodaya Yojana-National Rural Livelihood Mission (DAY – NRLM).
- It is launched under the aegis of Ministry of Panchayati Raj.

Which of the above statement(s) is/are **incorrect**?

- 1 and 3 only
- 2 and 3 only
- 1 and 2 only
- 1, 2 and 3

5) LF India, sometimes seen in the news recently, is associated with?

- A new initiative designed to promote open source development and adoption across India.
- A scheme designed to fund Indian start-ups, academia and R&D institutions.
- To enable affordable broadband and mobile services across India.
- To develop advanced semiconductor solutions for LEO satellite components.

Answers

1. b

National Commission for Minority Educational Institutions (NCMEI)

- National Commission for Minority Educational Institutions (NCMEI) is a Statutory Authority that was set up under the National Commission

for Minority Educational Institutions Act, 2004.

- The National Commission for Minority Educational Institutions (NCMEI) Act has been enacted to safeguard the educational rights of the minorities enshrined in **Article 30(1) of the Constitution**.
- The Commission is a **quasi-judicial body** and has been endowed with the **powers of a Civil Court** for the purpose of discharging its functions under the Act.
- It also serves as an *appellate authority* in respect of disputes pertaining to Minority Status/ No Objection Certificate (NOC).
- The term 'minority' is not defined in the constitution of India. (Statement 3 is incorrect)**

To know more about it [click here](#)

2. a

Moldova

Moldova recently joined the International Solar Alliance.

- Moldova is a **landlocked country** lying in the north-eastern corner of the Balkan region of **Europe**.
- Its **capital city is Chişinău**, located in the south-central part of the country.
- Formerly known as Bessarabia, this region was an integral part of the Romanian principality of Moldavia until 1812.
- Moldova is the 104th country to join the International Solar Alliance.**
- International Solar Alliance** – Is a collaborative initiative *between India and France* aimed at uniting efforts to combat climate change by implementing solar energy solutions.
- ISA Assembly** is the apex decision making body of it.
- It was *conceptualized on the side lines of COP21 in Paris in 2015*.
- Following a 2020 amendment to its Framework Agreement, all UN member states are now eligible to join the Alliance.
- As of December 2024, there are *104 members in the ISA*.

- Around 90+ countries having ratified to become full members.

Its mission is to unlock USD 1 trillion in solar investments by 2030 while reducing technology and financing costs.

3. a

Climate Country and Development Reports (CCDR)

- Country Climate and Development Reports (CCDRs) are a core diagnostic that integrates climate change and development.
- It is an **initiative by the World Bank**.
- CCDR help countries prioritize the most impactful actions that can reduce greenhouse gas (GHG) emissions and boost adaptation and resilience, while delivering on broader development goals.
- CCDRs build on data and rigorous research and identify main pathways to reduce GHG emissions and climate vulnerabilities, including the costs and challenges as well as benefits and opportunities from doing so.
- The reports suggest concrete, priority actions to support the low-carbon, resilient transition.

4. a

Namo Drone Didi

- **Aim** – To provide *drones to selected Women SHGs* for rental services to farmers for agriculture purposes like application of liquid fertilizers and pesticides.
- **Target** – To provide *15,000 drones* during the period 2024-25 to 2025-26 and during the financial year 2024-25, it has been targeted to distribute drones to 3090 SHGs in the 1st phase.
- It is a **central sector scheme** aiming to empower women-led Self-Help Groups (SHGs) by equipping them with drone technology to provide agricultural services.
- **Launched in** – 2023
- **Nodal Ministry** – **Ministry of Agriculture & Farmers Welfare**.
- **Umbrella scheme** – Namu Drone Didi is part of Deendayal Antyodaya Yojana-**National Rural Livelihood Mission** (DAY – NRLM).

To know more, click [here](#)

5. a

LF India

- LF India is a new initiative designed to promote open source development and adoption across India.
- LF India aims to *foster collaboration among developers, enterprises, government organizations, and intergovernmental organizations (IGOs)*.
- It was **launched by the Linux Foundation**, a global leader in open source innovation.
- LF India will serve as a “*sandbox for innovation*,” accelerating the incubation of new open source software (OSS) projects.
- The initiative plans to *engage regional start-ups and IGOs*, while providing training, hosting local events, and supporting community meetups to empower India’s growing pool of talented developers.
- India’s robust digital public infrastructure, largely built on open source technologies, and a thriving deep-tech start-up ecosystem make it an ideal location for this initiative.
- LF India is set to build on these strengths, advancing the region’s contributions to transformative global technologies.

21-12-2024

1) The governance-linked bond (GLB) is the first of its kind and is designed to reward which of the following country?

- a. Sri Lanka
- b. Afghanistan
- c. South Sudan
- d. Haiti

2) Consider the following statements with respect to the Siddha Varmam Therapy

1. It is a non-invasive, cost effective, non-pharmacological form of treatment.
2. It is used in treating complicated neurological diseases, musculoskeletal diseases, autism spectrum disease and cerebral palsy in children.

Which of the statements given above is/are correct?

- a. 1 only
- b. 2 only

- c. Both 1 and 2
- d. Neither 1 nor 2

3) Consider the following statements with respect to Lok Adalats

1. The Lok Adalats are organized on a non-working day of the Courts.
2. It is one of the alternative dispute redressal mechanisms and a forum where disputes/cases pending in the court of law are settled/compromised amicably.
3. The award (decision) made by the Lok Adalats is deemed to be a decree of a civil court and is final and binding on all parties and no appeal against such an award lies before any court of law.

How many of the statements given above are correct?

- a. Only one
- b. Only two
- c. All three
- d. None of the above

4) Consider the following statements with respect to Joint Committee of Parliament

1. A Joint Parliamentary Committee (JPC) is set up by the Parliament for a special purpose, like the detailed scrutiny of a subject or Bill.
2. It has members from both the Houses and from the ruling parties and the opposition.
3. The recommendations of a JPC are not binding on the government.

How many of the statements given above are correct?

- a. Only one
- b. Only two
- c. All three
- d. None of the above

5) Consider the following statements with respect to Travel and Tourism Development Index (TTDI), 2024

1. It is published by the World Economic Forum (WEF).

2. India is ranked 39th among 119 countries in the Index.

Which of the statements given above is/are correct?

- a. 1 only
- b. 2 only
- c. Both 1 and 2
- d. Neither 1 nor 2

Answers

1. a

Governance-linked Bond (GLB)

- The governance-linked bond (GLB) is the first of its kind and is designed to reward **Sri Lanka** for *transparency and effective economic management* by reducing the interest on its debt.
- To earn that reduction, Sri Lanka must meet targets, or key performance indicators (KPIs), seen as indicating better governance.
- The first KPI demands that Sri Lanka exceed a baseline ratio set by the International Monetary Fund (IMF) for total revenue to GDP in both 2026 and 2027, which the Fund has projected at 15.3% and 15.4% respectively.
- The second target requires the Finance Ministry to prepare and publish a "Fiscal Strategy Statement" in both 2026 and 2027.
- If Sri Lanka meets both targets, the bond coupon will be reduced by 75 basis points from late 2028.
- This would *reduce its interest payments by USD 80 million* over the remaining life of the instrument, which matures in 2035.
- **Macro-linked bonds** – Fixed income instruments with pay-outs linked to economic performance have been used by countries from Argentina to Greece and Ukraine.
- This is the first time in recent history that a bond includes a provision to adjust pay-outs not only to the upside, in case of better-than-expected growth, **but also to the downside** if the economy falls short of forecasts.
- *Sri Lanka's adjustment would come in 2028.*
- The upside scenario would mean an increase in both capital and interest payments, while the downside scenario could reduce the principal of the bond owed to creditors.

2. c

Siddha Varmam Therapy

The National Institute of Siddha (NIS) has set a Guinness World Record for providing Varmam therapy to 567 individuals simultaneously.

- Siddha Varmam therapy is a very unique, **non-invasive**, cost effective, non-pharmacological form of treatment.
- It's used in **treating complicated neurological diseases, ortho and musculoskeletal diseases**, autism spectrum disease, and cerebral palsy in children.
- Varmam therapy, a unique and traditional healing modality within the Siddha system of medicine, has long been revered for its effectiveness in treating various health conditions.
- While Varmakalai (the martial art form associated with Varmam) is often misunderstood as a combat technique, in Siddha medicine.
- It is a scientifically grounded therapeutic practice used to treat acute and chronic diseases, including stroke, arthritis, and trauma-related injuries.

3. c

Lok Adalats

- Lok Adalat is one of the **alternative dispute redressal mechanisms**.
- It is a forum where disputes/cases pending in the court of law or at pre-litigation stage are settled/ compromised amicably.
- Lok Adalats have been given *statutory status* under the Legal Services Authorities Act, 1987.
- Under the said Act, the award (decision) made by the Lok Adalats is deemed to be a decree of a civil court and is final and binding on all parties and no appeal against such an award lies before any court of law.
- The award (decision) made by the Lok Adalats is deemed to be a decree of a civil court and is **final and binding on all parties** and **no appeal against such an award lies before any court of law**.
- The Lok Adalats are organized on a non-working day of the Courts so that the Court's existing infrastructure can be used for periodic Lok Adalats.

- During the current year, National Lok Adalats were held on 9th March, 11th May, 14th September and 14th December.
- Similarly, National Lok Adalats are scheduled to be held on 8th March, 10th May, 13th September and 13th December during the year 2025.
- There is **no court fee** payable when a matter is filed in a Lok Adalat.
- Nature of Cases to be Referred to Lok Adalat
 - Any case pending before any court.
 - Any dispute which has not been brought before any court and is likely to be filed before the court.

4. c

Joint Committee of Parliament

- A Joint Parliamentary Committee (JPC) is set up by the Parliament for a special purpose, like the detailed scrutiny of a subject or Bill.
- It has **members from both the Houses** and from the ruling parties and the opposition.
- It is dissolved after its term ends or its task has been completed.
- Some examples of joint committees include one on the Waqf Amendment Bill, 2024, set up in August this year, and on The Personal Data Protection Bill of 2019.
- A JPC is set up after one House of Parliament has passed a motion and the other has agreed to it.
- Members of the JPC are decided by the Parliament and the number of members can vary.
- The proceedings and findings of the committee are confidential, except in matters of public interest.
- The government can decide to withhold a document if it is considered prejudicial to the safety or interest of the State.
- The Speaker has the final word in case of a dispute over calling for evidence.
- The recommendations of a JPC are **not binding on the government**.
- A few JPCs have earlier been set-up, having investigative powers include:

- To examine matters relating to Allocation and Pricing of Telecom Licenses and Spectrum.
- Pesticide Residues in and Safety Standard for Soft Drinks, Fruit Juice and other Beverages.
- On Stock Market Scam and Matters Relating to it.
- To enquire into irregularities in Securities and Banking Transactions.
- To enquire into Bofors Contract.
- To examine the Constitutional and Legal Position Relating to Office of Profit.”

5. c

Travel and Tourism Development Index (TTDI), 2024

- The Travel & Tourism Development Index (TTDI) 2024 is the 2nd edition of an index that evolved from the Travel & Tourism Competitiveness Index (TTCI) series.
- TTCI series a flagship index of the World Economic Forum that has been in production since 2007.
- TTDI is **part of the World Economic Forum's** broader work with industry and government stakeholders to build a more sustainable, inclusive, and resilient future for economies and local communities.
- **India is ranked 39th** among 119 countries in 2024 index.
- In the previous index published in 2021, India was ranked 54th.
- However, due to a revision in the WEF's methodology, India's 2021 rank was adjusted to 38th place.

23-12-2024

1) Consider the following statements with respect to Annual Health Index

1. Annual Health Index is a yearly report that tracks and ranks the health performance of states and Union Territories (UTs) in India.
2. It is released by National Institution for Transforming India (NITI Aayog) in collaboration with World Health Organization (WHO).

3. It ranks the states and UTs in 3 categories: larger states, smaller states, and Union territories (UTs).

Which of the statement(s) mentioned above is/are correct?

- a. Only one
- b. Only two
- c. All three
- d. None of the above

2) Consider the following statements with respect to Buffalo fights

1. The buffalo and bulbul fights are organized during the Magh Bihu (winter harvest festival) celebrations in Assam.
2. Traditional buffalo fights are popularly known as Moh Jooj in Assam.
3. Gauhati High Court recently reintroduced Standard Operating Procedures (SOPs) on traditional buffalo and bulbul (songbird) fights.

Which of the statement(s) mentioned above is/are incorrect?

- a. Only one
- b. Only two
- c. All three
- d. None of the above

3) Consider the following:

1. Purple Frog
2. Horse Shoe Crab
3. Frilled Shark
4. Amami Rabbit
5. Helmeted Water Toad

Which of the above-mentioned species are considered a living fossils?

- a. 1, 2 and 4 only
- b. 1 and 5 only
- c. 1, 2, 3 and 4 only
- d. All of the above

4) Consider the following statements with respect to Murder Hornet

1. It is an invasive species from Australia.
2. It is the largest member of the wasp family and is the world's largest hornet.
3. Their stingers deliver as much venom as a snake or 7 times that of a honeybee and its powerful sting can kill a human.

Which of the statement(s) mentioned above is/are correct?

- a. Only one
- b. Only two
- c. All three
- d. None of the above

5) Consider the following statements with respect to Leprosy

1. It is a chronic infectious disease caused by a type of bacteria, Mycobacterium leprae.
2. Leprosy is curable with multidrug therapy (MDT) and treatment in the early stages can prevent disability.
3. Leprosy, although largely eradicated in many parts of the world, still remains a public health concern in India.

Which of the statement(s) mentioned above is/are correct?

- a. Only one
- b. Only two
- c. All three
- d. None of the above

6) Consider the following statements with respect to Captagon

1. It is an addictive, amphetamine-type synthetic drug widely distributed in the middle-east.
2. It is often marked with 2 crescent moons.
3. It is banned in most countries, while 80% of the global supply comes from Syria.

Which of the statement(s) mentioned above is/are correct?

- a. Only one

- b. Only two
- c. All three
- d. None of the above

7) Consider the following statements with respect to Siliguri Corridor

1. It is a visa-free border crossing and religious corridor that connects India and Pakistan.
2. It is also known as the Chicken's Neck.

Which of the statement(s) mentioned above is/are correct?

- a. 1 only
- b. 2 only
- c. Both 1 and 2
- d. Neither 1 nor 2

8) Consider the following:

1. Chimpanzees
2. Striped skunk
3. Kea
4. Catfish
5. California ground squirrels

How many of the above-mentioned species are considered Opportunistic omnivores?

- a. Only two
- b. Only three
- c. Only four
- d. All five

Answers

1. b

Annual Health Index

- The Annual Health Index is a yearly report that tracks and ranks the *health performance of states and Union Territories (UTs)* in India.
- **Launched by** – National Institution for Transforming India (NITI Aayog) in 2017 in collaboration with

- Union Ministry of Health and Family Welfare (MoHFW)
- World Bank.
- The index also ranks states and UTs in 3 categories - Larger states, Smaller states, and Union territories (UTs).

2. a

Buffalo Fights

- The buffalo and bulbul fights are organized during the Magh Bihu celebrations, winter harvest festival in Assam.
- Traditional buffalo fights are popularly known as Moh Jooj in Assam.
- Gauhati High Court reintroduced a ban on traditional buffalo and bulbul (songbird) fights recently.

3. d

Living Fossil species

- Purple Frog
- Horse Shoe Crab
- Frilled Shark
- Amami Rabbit
- Helmeted Water Toad
- Alligator gar Fish
- Sturgeons
- Coelacanth

4.b

Murder Hornet

- **Murder Hornet**- *Northern giant hornet* are nicknamed as murder hornet, are an **invasive species from Asia**.
- **Features** – It is the *largest member of the wasp family*, measuring 2 inches in length and is the *world's largest hornet*.
- Their stingers deliver as much *venom as a snake or 7 times that of a honeybee* and its powerful sting can kill a human.

5.c

Leprosy

- **Leprosy** - It is a chronic infectious disease (Hansen's disease) caused by a type of bacteria, *Mycobacterium leprae*.

- Leprosy is curable with multidrug therapy (MDT) and treatment in the early stages can prevent disability.

- Leprosy, although largely eradicated in many parts of the world, still remains a public health concern in India.

6. c

Captagon

- An addictive, amphetamine-type synthetic drug widely distributed in the middle-east, often marked with 2 crescent moons.
- 80% of the global supply comes from **Syria** and banned in most of the countries.

7.b

Siliguri Corridor

- The Siliguri Corridor is a narrow stretch of land in West Bengal that connects the northeastern states with the rest of the country.
- It is also known as the Chicken's Neck.
- It was formed during the partition of Bengal and formation of East Pakistan during 1947.

8. d

- **Opportunistic omnivores** - Pig, Chimpanzees, Badger, Chicken, Kea, Catfish, Hedgehogs, Bears, Civet, Striped skunk, Raccoon, Ostriches and California ground squirrels.

24-12-2024

1) Consider the following statements with respect to National Green Tribunal

1. It is equipped with expertise solely for the purpose of adjudicating environmental cases in the country.
2. It is established under Environmental Protection Act, 1986.
3. Its orders are enforceable and have powers of a civil court under the Code of Civil Procedure, 1908.

Which of the statement(s) mentioned above is/are correct?

- a. Only one
- b. Only two
- c. All three

d. None of the above

2) Consider the following statements with respect to Space Docking Experiment (SpaDeX)

1. It is a mission to make multi-wavelength observations of celestial bodies and cosmic sources in X-ray and UV spectral bands simultaneously.
2. Developed by the Indian Space Research Organisation (ISRO).

Which of the statement(s) mentioned above is/are correct?

- a. 1 only
- b. 2 only
- c. Both 1 and 2
- d. Neither 1 nor 2

3) Panama Canal, often recently seen in the news connects which of the following?

- a. North Pacific Ocean and South Pacific Ocean
- b. Atlantic Ocean and Pacific Ocean
- c. Arctic Ocean and North Atlantic Ocean
- d. Arctic Ocean and North Pacific Ocean

4) Consider the following statements with respect to Kisan Kavach

1. It is a reusable protective suit designed to protect farmers from the harmful effects of pesticide exposure.
2. It is developed by IIT Bangalore in collaboration with CISCO.

Which of the statement(s) mentioned above is/are correct?

- a. 1 only
- b. 2 only
- c. Both 1 and 2
- d. Neither 1 nor 2

5) Consider the following statements with respect to Bharat Ratna

1. It is the highest civilian award in India, instituted in 1948.
2. To recognize exceptional service/performance of the highest order in any field.
3. The recommendations are made by the Prime Minister to the President.

Which of the statement(s) mentioned above is/are correct?

- a. Only one
- b. Only two
- c. All three
- d. None of the above

6) Consider the following statements with respect to Chilika Lake

1. It is the world's largest brackish water lagoon.
2. It is a Ramsar site situated in Odisha.
3. It is the habitat of the Critically endangered Irrawaddy dolphins.

Which of the statement(s) mentioned above is/are correct?

- a. Only one
- b. Only two
- c. All three
- d. None of the above

7) Consider the following statements with respect to National Farmers' Day

1. National Farmers' Day is observed on the 23rd of December.
2. This day honors the contributions of farmers and marks the birth anniversary of M.S.Swaminathan.

Which of the statement(s) mentioned above is/are correct?

- a. 1 only
- b. 2 only
- c. Both 1 and 2
- d. Neither 1 nor 2

Answers

1. b

National Green Tribunal

- It is equipped with expertise solely for the purpose of adjudicating environmental cases in the country.
- **Established in** – 2010, as per the National Green Tribunal Act.
- Its orders are enforceable and have powers of a civil court under the Code of, 1908.

2.b

Space Docking Experiment (SpaDeX)

- The Space Docking Experiment (SpaDeX) is a twin satellite mission² *satellites/spacecrafts will be launched* into orbit around the earth, where they will demonstrate various technologies while in motion.
 - **Primary objective** – Demonstration of *Docking manoeuvre*
 - **Secondary objectives** – Demonstration of the *transfer of electric power* between the docked spacecraft.
- **Developed by** - The Indian Space Research Organisation (ISRO).
- **Launch date** - December 30, 2024
- **Launch vehicle** - PSLV-C60.

3. b

Panama Canal

- It is a lock-type canal, opened in 1979.
- **Connects** – The Atlantic and Pacific oceans across the Isthmus of Panama.

4. a

Kisan Kavach

- A reusable protective suit designed to protect farmers from the harmful effects of pesticide exposure.
- **Developed by** – BRIC-inStem in Bangalore, in collaboration with Sepio Health Pvt. Ltd.,

5. c

Bharat Ratna awards

- It is the highest civilian award of the country, instituted in 1954.

- **Aim** – To recognize exceptional service/performance of the highest order in any field.
- **Recommendations** – Made by the Prime Minister to the President.

6.a

Chilika Lake

- Asia's largest brackish water lagoon, is a *Ramsar site* spanning 64 km in length and 13.5 km in width.
- **Location** – Near Satapada of *Odisha*, is connected to the Bay of Bengal via a shallow and narrow channel.
- **Biodiversity** – It is habitat of the *endangered Irrawaddy* dolphins, frequently sighted in the Satapada region.

7. b

National Farmers' Day

- National Farmers' Day is observed on the 23rd of December.
- This day honors the contributions of farmers.
- Birth anniversary of Shri Chaudhary Charan Singh, India's fifth Prime Minister from 1979 - 80, is observed as National Farmers' Day.

26-12-2024

1) Consider the following statements with respect to Dark Matter

1. It is an enigmatic invisible substance supplying five-sixths of the matter of the universe.
2. Dark matter interact with the electromagnetic radiation and absorb, reflect or emit light like normal matter.

Which of the statement(s) mentioned above is/are **incorrect**?

- a. 1 only
- b. 2 only
- c. Both 1 and 2
- d. Neither 1 nor 2

2) Consider the following statements with respect to Young Lawmakers

1. It refers to the representation of young adults in the age group of 18-40 years in legislatures.

2. Most of the political parties' Member of Parliaments (MPs) are aged 25-46 now.
3. Jharkhand is the youngest state assembly among the newly elected governments in 2024.

Which of the statement(s) mentioned above is/are correct?

- a. Only one
- b. Only two
- c. All three
- d. None of the above

3) Consider the following statements with respect to Rare diseases

1. Rare disease is a lifelong disease with a prevalence of 10 or fewer per 10,000 population According to Organization of Rare Diseases India (ORDI).
2. According to World Health Organization (WHO) defined rare disease as a disease when it affects 1 in 5,000 people.
3. Some of the most common rare disease in India are Mucopolysaccharidosis, Severe Combined Immunodeficiency (SCID), Phenylketonuria, Cystic Fibrosis.

Which of the statement(s) mentioned above is/are correct?

- a. Only one
- b. Only two
- c. All three
- d. None of the above

4) Which of the following states mentioned below have entirely/partially protected area permits/restricted area permits (RAP)?

1. Arunachal Pradesh
2. Manipur
3. Bihar
4. Nagaland
5. Sikkim
6. Uttar Pradesh
7. Jammu & Kashmir

Consider the codes:

- a. 1, 2, 4, 5 and 7 only
- b. 1, 2, 4 and 7 only
- c. 1, 2, 3, 4 and 5 only
- d. All of the above

5) Consider the following statements with respect to Jago Grahak Jago App

1. It is an app to create a secure cyber space by detecting botnet infections in India and to notify, enable cleaning and securing systems of end users so as to prevent further infections.
2. It is operated by the Indian Computer Emergency Response Team (CERT-In) under provisions of Section 70B of the Information Technology Act, 2000.

Which of the statement(s) mentioned above is/are correct?

- a. 1 only
- b. 2 only
- c. Both 1 and 2
- d. Neither 1 nor 2

6) Consider the following statements with respect to Bordoibam-Bilmukh Bird Sanctuary

1. Bordoibam-Bilmukh Bird Sanctuary is situated in Odisha.
2. It is declared as a wildlife sanctuary in 1996.
3. The number of avian species declined by almost 72% in 27 years.

Which of the statement(s) mentioned above is/are correct?

- a. Only one
- b. Only two
- c. All three
- d. None of the above

7) Consider the following statements with respect to India State of Forest Report 2023

1. It is an annual in-depth assessment of the country's forest and tree resources.

2. It is published by the Ministry of Environment, Forest and Climate Change.
3. For the first time, the trees between 5-10 cm have been included in the analysis of 2023 for Tree Cover and Growing stock.

Which of the statement(s) mentioned above is/are correct?

- a. Only one
- b. Only two
- c. All three
- d. None of the above

8) Which of the following countries spanning the Caucasus Mountains?

1. Armenia
2. Azerbaijan
3. Georgia
4. Russia
5. Turkey

Consider the codes:

- a. 1, 2 and 4 only
- b. 2, 3 and 4 only
- c. 1, and 4 only
- d. All of the above

Answers

1. b

Dark Matter

- It is an enigmatic invisible substance supplying five-sixths of the matter of the universe.
- Unlike normal matter, dark matter *does not interact with the electromagnetic radiation. (Statement 2 is incorrect).*
- It does *not absorb, reflect or emit light.*

2. a

Young Lawmakers

- It refers to the representation of *young adults in the age group of 25-40 years* in legislatures. **(Statement 1 is incorrect).**

- Most political parties' MPs are **aged 46 to 65. (Statement 2 is incorrect).**

- **Jharkhand is the youngest state assembly** among the newly elected governments in 2024.

3. a

Rare diseases

- According to WHO, Rare disease is a lifelong disease with a prevalence of 10 or fewer per 10,000 population. **(Statement 1 is incorrect).**
- According to Organization of Rare Diseases India (ORDI) defined rare disease as a disease when it affects 1 in 5,000 people. **(Statement 2 is incorrect).**
- **Most common rare disease in India**
 - Lysosomal Storage Disorders
 - Pompe disease (Glycogen storage disease type II)
 - Anderson–Fabry disease
 - Mucopolysaccharidosis
 - Severe Combined Immunodeficiency (SCID)
 - Phenylketonuria
 - Cystic Fibrosis
 - Duchenne Muscular Dystrophy

4.a

- **Areas covered by PAP**

- Whole of Arunachal Pradesh, Whole of Manipur, Whole of Mizoram, Whole of Nagaland, Whole of Sikkim (partly in Protected Area and partly in Restricted Area),
- Parts of Uttarakhand, Parts of Himachal Pradesh, Parts of Jammu & Kashmir and Parts of Rajasthan.

- Bihar and Uttar Pradesh is not covered under protected area permits/restricted area permits (RAP).

5.d

Jago Grahak Jago App

- It provides *essential e-commerce information* about all URLs during a

consumer's online activities. **(Statement 1 is incorrect).**

- It alerts consumers if any URL may be unsafe and requires caution. **(Statement 2 is incorrect).**

6. b

Bordoibam-Bilmukh Bird Sanctuary

- **Location** – It is situated in north-eastern Assam. **(Statement 1 is incorrect).**
- It is declared as a wildlife sanctuary in 1996.
- The number of avian species declined by almost 72% in 27 years.

7. a

India State of Forest Report 2023

- It is an in-depth *Biennial* assessment of the forest and tree resources of the country. **(Statement 1 is incorrect)**
- It is published by the *Forest Survey of India (FSI)*. **(Statement 2 is incorrect)**
- For the first time, the trees between 5-10 cm have been included in the analysis of 2023 for Tree Cover and Growing stock.

7. d

- **Caucasus Mountains** – It spans Armenia, Azerbaijan, Georgia, Russia, and Turkey.

27-12-2024

1) Consider the following statements with respect to the Environmental DNA (eDNA)

1. It is the mitochondrial DNA that is released from an organism into the environment through natural processes during their lifetime or after death.
2. eDNA method is a non-invasive method to assess the total biodiversity of any ecosystem by sequencing the DNA found in the environments.

Which of the statements given above is/are **incorrect**?

- a. 1 only
- b. 2 only
- c. Both 1 and 2
- d. Neither 1 nor 2

2) Kilauea, sometimes seen in the news recently, is associated with?

- a. Hawaiian Islands
- b. Bora Bora
- c. Vancouver Island
- d. Madagascar

2.a

3) Consider the following statements with respect to SVAMITVA Yojana

1. It provides a 'Record of Rights' to village household owners with the issuance of legal ownership cards to the property owners by mapping land parcels using drone technology.
2. It is a Central Sector scheme of the Ministry of Panchayati Raj.
3. Both agricultural lands and residential lands are covered under the scheme.

How many of the statements given above are correct?

- a. Only one
- b. Only two
- c. All three
- d. None of the above

4) Consider the following statements with respect to SLINEX 24

1. It is bilateral naval exercise between India and Sri Lanka.
2. It was held at Visakhapatnam.

Which of the statements given above is/are correct?

- a. 1 only
- b. 2 only
- c. Both 1 and 2
- d. Neither 1 nor 2

5) Consider the following pairs:

Terms in News		Regions
1. Coiba National Park	–	Panama
2. Everglades National Park	–	US

3. Sundarbans – Bay of Bengal

How many of the above pair(s) is/are correctly matched?

- a. Only one
b. Only two
c. All three
d. None of the above

Answers

1.d

Environmental DNA (eDNA)

- eDNA is the nuclear or mitochondrial DNA that is released from an organism into the environment through natural processes during their lifetime or after death.
- Sources of eDNA** – Secreted feces, mucous, and gametes; shed skin and hair; and carcasses.
- eDNA method** – A non-invasive method to assess the total biodiversity of any ecosystem by sequencing the DNA found in the environments.
- Developed by** – Laboratory for the Conservation of Endangered Species (LaCONES), a CSIR-Centre for Cellular and Molecular Biology (CCMB) laboratory headquartered in Hyderabad.

To know more about eDNA [click here](#)

2.a

Kilauea

- Kilauea is an **active shield volcano**.
- It is situated at **Hawaiian Islands**.
- It is located within Hawaiian Volcanoes National Park.

3.b

SVAMITVA Yojana (Survey of Villages and Mapping with Improvised Technology in Village Areas)

- SVAMITVA Yojana provides a 'Record of Rights' to village household owners with the issuance of legal ownership cards (Property cards/Title deeds) to the property owners by mapping land parcels using drone technology.
- Agricultural Lands are not covered under this scheme. (Statement 3 is incorrect)**

- SVAMITVA is a Central Sector Scheme of Ministry of Panchayati Raj.
- It was launched by the Hon'ble Prime Minister **on National Panchayati Raj Day, 24th April 2021** after successful completion of pilot phase of scheme (2020-2021) in 9 states.
- There are about 6.62 lakh villages in the country which will be eventually covered in this scheme.
- The entire work is likely to be spread for five years.
- The applicant should have a property in rural inhabited (Abadi) area.*

4.c

SLINEX 24

- SLINEX 24 is bilateral **naval exercise** between **India and Sri Lanka**.
- It was conducted from 17 to 20 Dec 24 **at Visakhapatnam** under the aegis of the Eastern Naval Command in two phases.
- INS Sumitra** of the Eastern Fleet, along with Special Forces team participated from Indian side.
- SLINEX series of bilateral exercises were **initiated in 2005** and since then regular exercises have been conducted.

5. c

Coiba National Park, Everglades National Park & Sundarbans

- Coiba National Park** is a UNESCO World Heritage Site in **Panama** that's known for its remarkable biodiversity and marine life.
- Everglades National Park**, large natural area encompassing the southwestern portion of the more extensive Everglades region in **southern Florida, U.S.**
- The **Sundarbans mangrove forest**, one of the largest such forests in the world (140,000 ha), lies on the delta of the Ganges, Brahmaputra and Meghna rivers on the **Bay of Bengal**.

28-12-2024

1) Consider the following statements with respect to the National Accreditation Board for Testing and Calibration Laboratories (NABL)

- It works to improve the quality of testing and calibration services, ensuring trust in the

products and services used by consumers, businesses and regulators.

2. It is a constituent board of the Quality Council of India (QCI).

Which of the statements given above is/are correct?

- a. 1 only
- b. 2 only
- c. Both 1 and 2
- d. Neither 1 nor 2

2) Port Louis, sometimes seen in the news recently, is situated at?

- a. Mauritius
- b. India
- c. Sri Lanka
- d. Vietnam

3) Consider the following statements with respect to Town Official Language Implementation Committee

1. It can be constituted in any town which has 10 or more Central Government offices.
2. It aids to promote the progressive use of the Official Language in the offices / undertakings / banks and so on of the Central Government spread across the country.
3. The chairman of the committee is nominated by the Department of Official Language.

How many of the statements given above are correct?

- a. Only one
- b. Only two
- c. All three
- d. None of the above

4) Consider the following statements with respect to the Household Consumption Expenditure Survey (HCES)

1. HCES is designed to collect information on consumption and expenditure of the households on goods and services.
2. The survey provides data required to assess trends in economic well-being and to determine

and update the basket of consumer goods and services.

Which of the statements given above is/are **incorrect**?

- a. 1 only
- b. 2 only
- c. Both 1 and 2
- d. Neither 1 nor 2

5) Consider the following statements with respect to Sea Otter

1. Sea otters have webbed feet, water-repellent fur to keep them dry and warm.
2. It is listed as 'Endangered' in the IUCN Red List.

Which of the statements given above is/are correct?

- a. 1 only
- b. 2 only
- c. Both 1 and 2
- d. Neither 1 nor 2

Answers

1.c

National Accreditation Board for Testing and Calibration Laboratories (NABL)

- NABL aims to provide Government, Industry Associations and Industry in general with a scheme for *3rd party assessment of the quality*
- *and technical competence of testing and calibration laboratories.*
- NABL *offers accreditation services* to the laboratories in a non-discriminatory manner.
- NABL is **self-financing** and charges fees to Conformity Assessment Bodies to cover operational costs and other expenditure.
- NABL offers accreditation services in a non-discriminatory manner.
- It is a *constituent board of the Quality Council of India (QCI).*
- **Quality Council of India (QCI)** – Is a premier autonomous body set up by the Government of India.

- QCI is responsible for creating a Quality Mind-set and envisions to ensure quality across products and services that touch every citizen.
 - QCI creates a mechanism for independent third-party assessments of products, services and processes, coordinating its activities through its constituent boards and divisions.
 - The *Department for Promotion of Industry and Internal Trade (DPIIT)*, Ministry of Commerce & Industry, serves as the **nodal point** for QCI.
- To promote its use so that the problems arising in its implementation could be solved.
- The objective of the committee **doesn't include to translate government documents into regional languages.**
 - **Chairman** – The committees are *presided over by one of the senior most officers of the offices of the Central Government/Undertakings/Banks etc.*, located in that town. (**Statement 3 is incorrect**)

2. a

Port Louis

INS Sarvekshak arrived at Port Louis, Mauritius recently to undertake Joint Hydrographic Survey.

- Port Louis is the capital and main port of the **island of Mauritius** in the western Indian Ocean.
- It lies between a well-sheltered, deep-water harbour, accessible to ships through a break in the coral reef, and a semicircle of mountains.
- **INS Sarvekshak** arrived at Port Louis to undertake Joint Hydrographic Survey.

INS Sarvekshak (J22) is a hydrographic survey ship in the Indian Navy, under the Southern Naval Command.

- INS Sarvekshak will engage with Mauritian authorities through technical knowledge exchange, professional interactions and training sessions on hydrography.
- This crucial survey will enable Mauritius to *develop maritime infrastructure*, resource management and coastal development planning.

3.b

Town Official Language Implementation Committee (TOLIC)

- Town Official Language Implementation Committee (TOLIC) can be **constituted in all the cities** and towns, where the number of the Central Government offices is **10 or more** than that.
- The **main objectives** of the committees is to:
 - Review the implementation of Official Language Policy in the Central Government Offices/Undertakings/Banks and so on.

- **The chairman is nominated by Department of Official Language.**
- Before being nominated, the willingness of the proposed Chairperson is obtained in writing regarding the chairmanship of the committee.
- **Membership** – Offices of the Union Government /Undertakings/Banks and so on located in the town are members of the committee.
- The senior most officers (administrative heads) of these offices are required to regularly attend the meetings of the committee.
- **Member Secretary** – The Chairman of the Committee nominates a Hindi expert with his consent, to the post of Member Secretary for the management of the Secretariat of the Committee.
- The Member-Secretary conducts the activities of the committee with the permission of the Chairman.

4.d

Household Consumption Expenditure Survey (HCES)

- HCES is designed to collect information on consumption and expenditure of the households on goods and services.
- The survey provides data required to assess trends in economic well-being and to determine and update the basket of consumer goods and services and weights used for the calculation of the Consumer Price Index.
- Data collected in HCES is also used to *measure poverty, inequality, and social exclusion.*
- The Monthly Per Capita Consumption Expenditure (MPCE) compiled from HCES is the *primary indicator used for most analytical purposes.*

5.c

Sea Otter (*Enhydra lutris*)

- Sea Otter is an aquatic member of the weasel family.
- It is *found along the coasts of the Pacific Ocean in North America and Asia.*
- The sea otter spends most of its time in the water but, in some locations, comes ashore to sleep or rest.
- They have **webbed feet, water-repellent fur** to keep them dry and warm, and nostrils and ears that close in the water.
- Sea otters are wild animals that are meticulously clean.
- It is listed as 'Endangered' in the International Union for Conservation of Nature (IUCN) Red List.
- They are a rare species as humans excessively hunted them in the 18th and 19th Century.
- They were mainly hunted for their thick, soft fur.

30-12-2024

1) Consider the following statements with respect to Matsya Seva Kendras (MSKs)

1. It is a public distribution system (PDS) scheme to provide food grains at subsidized rates to the poorest families.
2. It is under the Ministry of Food and Public Distribution.

Which of the following statement(s) is/are correct?

- a. 1 only
- b. 2 only
- c. Both 1 and 2
- d. Neither 1 nor 2

2) Consider the following statements with respect to Avian influenza

1. It is a highly contagious, viral, zoonotic disease.
2. It is known to be carried by wild birds, especially waterfowl, raptors, and vultures.
3. H5N1 virus is a subtype of Avian Influenza A.

Which of the following statement(s) is/are correct?

- a. Only one

- b. Only two
- c. All three
- d. None of the above

3) Consider the following statements with respect to Parker Solar Probe

1. It aims to make observations of the outer corona of the Sun.
2. It is launched by Japan Aerospace Exploration Agency (JAXA) in 2018.
3. It moves faster than any human-made object.

Which of the following statement(s) is/are correct?

- a. Only one
- b. Only two
- c. All three
- d. None of the above

4) Consider the following statements with respect to Urs Festival

1. It is an annual festival held at Bihar.
2. It celebrated for the death anniversary of Birsa Munda.

Which of the following statement(s) is/are correct?

- a. 1 only
- b. 2 only
- c. Both 1 and 2
- d. Neither 1 nor 2

5) Consider the following statements with respect to Three Gorges Dam

1. It is the world's largest Dam located in China.
2. It is built on the Mekong River.

Which of the following statement(s) is/are correct?

- a. 1 only
- b. 2 only
- c. Both 1 and 2
- d. Neither 1 nor 2

6) Consider the following statements with respect to Operation Poseidon Archer

- The operation was launched to evacuate Indian nationals from Haiti amidst civil unrest.
- It is a sustained bombing campaign to degrade Houthi military capabilities in Yemen.
- It is an operation conducted by the Indian Armed Forces to evacuate Indian citizens and foreign nationals from Sudan during the conflict.
- It is an operation by India to evacuate Indian nationals from Israel and Palestine.

7) Consider the following statements with respect to Bald Eagle

- It is a bird of prey native only to North America.
- It is a white-headed and yellow-beaked bird symbolizes freedom and bravery in USA since 178
- It has been officially named the national bird of USA recently.

Which of the following statement(s) is/are correct?

- Only one
- Only two
- All three
- None of the above

Answers

1.d

Matsya Seva Kendras (MSKs)

- It aims to provide a one-stop solution for fishers and fish farmers through a range of extension services provided by trained aquaculture professionals. **(statement 1 is incorrect)**
- It is under the Umbrella scheme Pradhan Mantri Matsya Sampada Yojana (PMMSY).
- Nodal Ministry** – Ministry of Fisheries, Animal Husbandry & Dairying. **(statement 2 is incorrect).**

2.c

Avian influenza

- It is highly contagious and spreads through direct contact with infected birds or their

secretions, including saliva, feathers, and faeces.

- Avian influenza is a zoonotic disease, meaning it can spread from animals to humans.
- H5N1** – It is a subtype of Avian Influenza A, was 1st detected in geese, China on 1996 and causing outbreaks in birds since then.

3.b

Parker Solar Probe

- Launched in** - 2018.
- Launched by** – National Aeronautics and Space Administration (NASA). **(statement 2 is incorrect)**
- Aim** – To make observations of the outer corona of the Sun.
- Speed** – It moves faster than any human-made object, up to 430,000 mph.

4.d

Urs Festival

- It is an annual festival held at Ajmer, Rajasthan. **(statement 1 is incorrect)**
- Commemoration** – For the death anniversary of Sufi saint Hazrat Khwaja Moinuddin Chishti. **(statement 2 is incorrect)**
- Jan Jatiya Gaurav Diwas Celebrated in honour of 150th birth anniversary of Baghwan Birsa Munda.

5. b

Three Gorges Dam

- It is world's largest Dam, located in China's Hubei Province.
- Built on - Yangtze River. **(statement 2 is incorrect)**

6. b

Operation Poseidon Archer

- It is a sustained *bombing campaign* to degrade Houthi military capabilities in Yemen.
- Launched by** – United States, United Kingdom, and their allies.

Other operations

- **Operation Indravati** - Launched in March 2024, this operation is to evacuate Indian nationals from Haiti due to civil unrest.
- **Operation Kaveri** - It is an operation conducted by the Indian Armed Forces to evacuate Indian citizens and foreign nationals from Sudan during the conflict.
- **Operation Ajay** - In 2023, India evacuated Indian nationals from Israel and Palestine.

7.c

Bald Eagle

- It is a bird of prey native only to North America.
- It is a white-headed and yellow-beaked bird symbolizes freedom and bravery in USA since 1782.
- It has been officially named the national bird recently.

31-12-2024

1) Consider the following statements with respect to Fishing Cat

1. It is one of the largest of the 28 species of small cats and is about twice the size of a typical house cat.
2. The Coringa Wildlife Sanctuary (CWS) is home to larger number of fishing cat.
3. It is a nocturnal animal which preys on scavenges on carcasses of larger animals.
4. It is listed as Critically Endangered in IUCN status of Red list.

Which of the following statement(s) is/are correct?

- a. Only one
- b. Only two
- c. Only three
- d. All four

2) Consider the following statements with respect to Overseas Voters

1. Election Commission of India describes Non Resident Indian (NRI) voters as overseas electors.

2. They are eligible to vote in the Lok Sabha, Assembly and other direct elections.

Which of the following statement(s) is/are correct?

- a. 1 only
- b. 2 only
- c. Both 1 and 2
- d. Neither 1 nor 2

3) The term Louisiana Purchase, often recently seen in news is a treaty between which of the following countries?

- a. United States and India
- b. United States and France
- c. Russia and India
- d. Russia and France

4) Consider the following statements with respect to Har Ghar Jal

1. To provide 55 litres of tap water to every rural household per capita per day regularly on long term basis by 2024.
2. It is launched by Ministry of Rural Development.

Which of the following statement(s) is/are correct?

- a. 1 only
- b. 2 only
- c. Both 1 and 2
- d. Neither 1 nor 2

5) The recent Marine heatwave has decimated nearly 4 million of these seabirds over three years. These are sleek, powerful seabirds distributed across the colder circumpolar waters of the North Pacific and North Atlantic Oceans. During the breeding season, their heads are entirely black. Which of the below-mentioned seabirds is described here?

- a. Black-legged kittiwake
- b. Common murre
- c. Horned puffin
- d. Auk

6) Consider the following statements with respect to Surya Kiran Exercise 2024

1. It is a biennial event that alternates between India and Bhutan.
2. It is to improve cooperation in jungle warfare, counter-terrorism operations in mountainous regions, and disaster relief efforts in line with the United Nations Charter.

Which of the following statement(s) is/are correct?

- a. 1 only
- b. 2 only
- c. Both 1 and 2
- d. Neither 1 nor 2

6.b

7) Consider the following statements with respect to Pradhan Mantri Rashtriya Bal Puraskar

1. Bal Kalyan Puraskar is awarded to children of 5 -18 age group for outstanding achievement in innovation, scholastic achievements, social service, arts and culture, bravery, or sports.
2. Bal Shakti Puraskar is awarded to individuals or organisations that have made outstanding contributions in child development, child protection, or child welfare.

Which of the following statement(s) is/are correct?

- a. 1 only
- b. 2 only
- c. Both 1 and 2
- d. Neither 1 nor 2

8) Consider the following statements with respect to Central Zoo Authority (CZA)

1. It is a statutory body constituted in 1992 under the Environmental (Protection) Act, 1986.
2. It aims to bring Indian zoos up to international standards.
3. It is an affiliate member of the World Association of Zoos and Aquariums (WAZA).

Which of the following statement(s) is/are correct?

- a. Only one
- b. Only two
- c. All three
- d. None of the above

Answers

1. c

Fishing Cat

- It is one of the *largest of the 28 species of small cats* and is about twice the size of a typical house cat.
- Coringa Wildlife Sanctuary (CWS) which is India's 2nd largest mangroves, is home to larger number of fishing cat.
- It is a *nocturnal* animal that preys on frogs, crustaceans, snakes, birds and scavenges on *carcasses* of larger animals.
- **Conservation Status**
 - IUCN – Endangered.
 - CITES – Appendix II.
 - Indian Wildlife (Protection) Act, 1972 – Schedule I. (**Statement 4 is incorrect**).

2.c

Overseas Voters

- Generally, they are *referred as NRI voters* but Election Commission of India describes them as overseas electors.
- NRI's are Indians living abroad for a variety of reasons and
- **Voting rights** - They are *eligible to vote in the Lok Sabha, Assembly and other direct elections*.
- They have to show their original passport as proof of their identity.

3.b

Louisiana Purchase

- **Treaty between** – The United States and France in 1803.
- **Effect** – It added 828,000 square miles of land to the United States, nearly doubling its size.

4.a

Har Ghar Jal

- To provide *55 litres of tap water* to every rural household per capita per day regularly on long term basis *by 2024*.
- **Launched by** – Ministry of Jal Shakthi, in 2019. **(Statement 2 is incorrect).**

5.b

- Answer - Common murre (Uria aalge).

6.b

Surya Kiran Exercise 2024

- It is *annual event* that alternates between India and Nepal. **(Statement 1 is incorrect).**
- **Location** – In *Nepal* from December 2024, to January 2025.
- It is to improve cooperation in jungle warfare, counter-terrorism operations in mountainous regions, and disaster relief efforts in line with the United Nations Charter.

7.d

Pradhan Mantri Rashtriya Bal Puraskar

- **Bal Shakti Puraskar** - Awarded to children of 5 -18 age group for outstanding achievement in innovation, scholastic achievements, social service, arts and culture, bravery, or sports. **(Statement 1 is incorrect).**
- **Bal Kalyan Puraskar** - To individuals or organisations that have made outstanding contributions in child development, child protection, or child welfare. **(Statement 2 is incorrect).**

8.b

Central Zoo Authority (CZA)

- **CZA** - Central Zoo Authority (CZA) is a statutory body constituted in 1992 under the Wildlife (Protection) Act, 1972. **(statement 1 is incorrect)**
- **Objective** - To bring Indian zoos up to international standards.
- It is an affiliate member of the World Association of Zoos and Aquariums (WAZA).